

**Athens-Clarke County and
The City of Winterville**

Community Assessment Chapter One: Population

July 12, 2006

CHAPTER 1: POPULATION

TABLE OF CONTENTS

- CHAPTER 1: POPULATION 2
- 1.3 LIST OF TABLES 3
- 1.3 INTRODUCTION..... 5
- 1.4 TOTAL POPULATION..... 5
 - 1.4.1 *Population Trends (Past and Present)* 5
 - 1.4.2 *Future Projections* 6
 - 1.4.2.1 *Projected Population for Athens-Clarke County* 6
 - 1.4.2.2 *Projected Population for the City of Winterville* 9
 - 1.4.3 *Growth Rate comparison to other areas*..... 11
 - 1.4.3.1 *Comparison of Georgia Metropolitan Statistical Areas (MSAs) Growth Rates* 12
 - 1.4.3.2 *Comparison of Athens MSA Member County Growth Rates*..... 15
 - 1.4.4 *Household Characteristics* 16
 - 1.4.4.1 *Household Characteristics for Athens-Clarke County* 17
 - 1.4.4.2 *Household Characteristics for the City of Winterville*..... 17
- 1.5 AGE DISTRIBUTION..... 19
 - 1.5.1 *Age Groupings (Past – Present)*..... 19
 - 1.5.1.1 *Athens-Clarke County Age Groupings (Past – Present)* 19
 - 1.5.1.2 *City of Winterville Age Groupings (Past – Present)* 20
 - 1.5.2 *Future Projections* 21
 - 1.5.2.1 *Athens-Clarke County Future Projections*..... 21
 - 1.5.2.2 *City of Winterville Future Projections*..... 22
 - 1.5.2.3 *Median Age Projections*..... 23
 - 1.5.3 *Identification of Implications for the Community* 25
- 1.6 RACE AND ETHNICITY 25
 - 1.6.1 *Racial and Ethnic Composition (Past – Present)* 25
 - 1.6.1.1 *Racial Characteristics for Athens-Clarke County* 25
 - 1.6.1.2 *Racial Characteristics for the City of Winterville*..... 26
 - 1.6.2 *Future Projections* 28
 - 1.6.3 *Comparison to Other Areas*..... 28
 - 1.6.4 *Identification of Implications for the Community* 29
- 1.7 INCOME CHARACTERISTICS..... 29
 - 1.7.1 *Income Characteristics for Athens-Clarke County*..... 30
 - 1.7.2 *Income Characteristics for the City of Winterville*..... 30
- 1.8 EDUCATIONAL ATTAINMENT 33
 - 1.8.1 *Trends and Comparison to Other Areas*..... 33
 - 1.8.2 *Identification of Implications for the Community* 34

1.3 List of Tables

Table 1: Total Population and Percentage Growth Rate for Athens-Clarke County, City of Winterville, Athens MSA, State of Georgia (1980 – 2000)	6
Table 2: Athens-Clarke County Population Projections.....	7
Table 3: Athens-Clarke County Range of Population Projections through 2030.....	7
Table 4: City of Winterville Population Projections.....	9
Table 5: Rate of Growth Comparisons: Athens-Clarke County, City of Winterville, Athens MSA, State of Georgia.....	12
Table 6: Population Growth for Georgia: MSAs Outside of Atlanta.....	13
Table 7: Percent Population Growth for Central Counties in Georgia MSAs.....	14
Table 8: Percent Population Growth for Central Counties in Georgia MSAs.....	14
Table 9: Population Growth 1980-2000 Athens-Clarke County, City of Winterville, Athens MSA, State of Georgia.....	15
Table 10: Historical and Projected Household Growth for Athens-Clarke County, 1980 - 2020.....	18
Table 11: Historical And Projected Average Household Size for Athens-Clarke County, City of Winterville, Athens MSA, State of Georgia, 1980 - 2020	19
Table 12: Population by Age Group for Athens-Clarke County, 1980-2000	20
Table 13: Population by Age Group for the City of Winterville, 1980-2000.....	21
Table 14: Population by Age Group Athens-Clarke County, 2005-2030.....	22
Table 15: Population by Age Group, City of Winterville, 2005-2030.....	23
Table 16: Median Age in Athens-Clarke County, City of Winterville, and the State of Georgia	24
Table 17: Historical Population Growth by Racial Category – White Population Athens-Clarke County, City of Winterville, Athens MSA, State of Georgia, 1980-2000	26
Table 18: Historical Population Growth by Racial Category – African-American Population Athens-Clarke County, City of Winterville, Athens MSA, State of Georgia, 1980-2000	27
Table 19: Historical Population Growth by Racial Category – Other Population Athens-Clarke County, City of Winterville, Athens MSA, State of Georgia 1980-2000	27
Table 20: Historical and Projected Racial Composition, 1980-2020	28
Table 21: 2000 Comparative Race and Ethnic Population Composition for Athens MSA, Athens-Clarke County and the City of Winterville	29
Table 22: Per Capita Income, 1979-1999.....	31
Table 23: Median Household Income, 1980-2000	32
Table 24: Distribution of Households by Income for Athens-Clarke County, City of Winterville, and Georgia.....	32

Table 25: Educational Attainment Comparison Highest Educational Level Completed
for Persons Age 25 and Older 34

1.3 Introduction

The purpose of the population element of the *Comprehensive Plan for Athens-Clarke County and the City of Winterville* is to inventory and assess selected population characteristics of the community. The information provided in the population element provides the foundation for other planning elements relating to Economic Development, Community Facilities, Housing, and Land Use.

An analysis of existing and projected population characteristics is among the first issues evaluated in an update of a community's Comprehensive Plan. The population characteristics evaluated in the population element include: total population, age distribution, households, racial composition, personal/household income levels, and educational attainment.

1.4 Total Population

An examination of the population data for Athens-Clarke County and the City of Winterville must begin with an overview of the populations for these areas as a whole before the more detailed review of topical sub-category analysis can be undertaken. This section of this chapter provides a review of the past population trends that have resulted in the current population figures, as well as projections for future population growth, growth rate comparisons with other areas, and household population data.

1.4.1 Population Trends (Past and Present)

During the period from 1980 to 2000, population growth in Athens-Clarke County and the City of Winterville was relatively constant, although the percentage rates of growth in these two jurisdictions were very dissimilar. During the period from 1980 to 1990, Athens-Clarke County witnessed a growth rate of about 8.4%, but this rate was somewhat less than the growth rate for the state during that same period, (approximately 9.3%) and considerably less than the City of Winterville's growth rate (approximately 16.9%). From 1990 to 2000, Athens-Clarke County's growth rate decreased modestly to 6.7% and Winterville's growth rate slowed to a strong 9.9%, while the state's growth rate increased remarkably to approximately 13.2%. These trends demonstrate that Athens-Clarke County's population growth has remained relatively constant and without dramatic fluctuations, while forces at the macro (state) level were undergoing significant changes and even the slightest shift in housing or employment can represent very large statistical variations at the micro (Winterville)

level. The information in Table 1: Total Population and Percentage Growth Rate for Athens-Clarke County, City of Winterville, Athens MSA, State of Georgia (1980 – 2000) identifies these trends. The Athens MSA, or Metropolitan Statistical Area, is a geographic area identified by the U.S. Census Bureau for evaluating census data for an area containing a recognized population nucleus and adjacent communities that have a high degree integration with that nucleus. The Athens MSA is comprised of the following counties and all of the incorporated municipalities within them: Clarke, Oconee, Madison, and Oglethorpe.

Table 1: Total Population and Percentage Growth Rate for Athens-Clarke County, City of Winterville, Athens MSA, State of Georgia (1980 – 2000)

Location	Total Population			Growth Rate Percentages			
	1980	1990	2000	1980-1985	1985-1990	1990-1995	1995-2000
Athens-Clarke	75,020	88,060	101,750	8.7%	8.0%	6.9%	6.5%
City of Winterville	641	876	1,068	18.3%	15.4%	10.9%	8.9%
Athens MSA	104,672	126,262	139,853	10.4%	9.4%	10.3%	9.4%
Georgia	5,462,982	6,478,216	8,186,453	9.27%	9.27%	13.18%	13.18%

Source: A-CC Planning Department, 2005, US Bureau of the Census, 1980-2000.

1.4.2 Future Projections

Attempting to accurately predict what type of community changes will occur and at what magnitude is often very difficult without an understanding of what has happened in the past and how those trends relate to the present and foreseeable future. The following analysis projects population data for Athens-Clarke County and the City of Winterville based on known growth trends over the past twenty years and informed assumptions regarding the anticipated conditions that will affect growth in the future.

1.4.2.1 Projected Population for Athens-Clarke County

In projecting the population for Athens-Clarke County, three scenarios are illustrated that reflect what is perceived as low, moderate, and high growth rates. For interim planning purposes, it is recommended that the moderate growth scenario be used. As

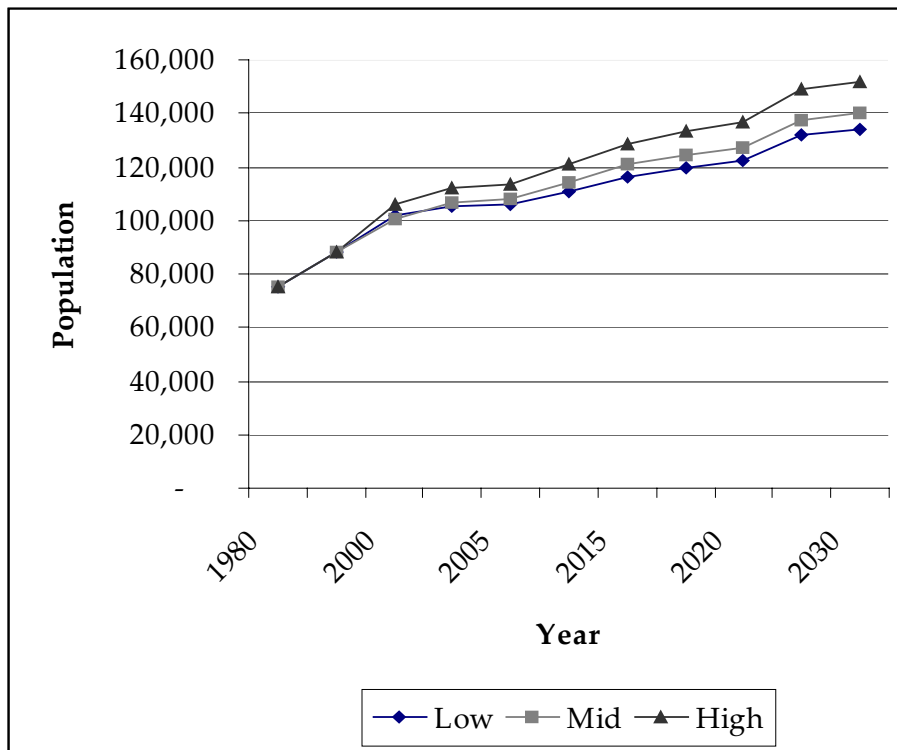
the planning process moves forward following the update of the Comprehensive Plan, this figure should be re-evaluated periodically. The first comprehensive opportunity to re-evaluate the accuracy of these projections will come with the completion of the national decennial census for the year 2010.

Table 2: Athens-Clarke County Population Projections

Year	Low	Moderate	High
1980	75,020	75,020	75,020
1990	88,060	88,060	88,060
2000	100,266	101,750	105,787
2005	106,010	107,918	113,479
2010	111,110	114,346	121,167
2015	116,530	120,774	128,862
2018	119,601	124,631	133,477
2020	122,240	127,203	136,554
2028	132,057	137,753	148,861
2030	133,722	140,060	151,937

Source: A-CC Planning Department, 2005, US Bureau of the Census, 1980-2000.

Table 3: Athens-Clarke County Range of Population Projections through 2030



The population of Athens-Clarke County has been projected in 5-year increments from the years 2000 to 2020. Also included are projections for 2018, which is the extent of the planning window for this document, projections through 2028 for comparative purposes during the next update to the Comprehensive Plan, and a projection through 2030 which is consistent with the population analysis used in local transportation planning documents. These population projections are illustrated in Table 2: Athens-Clarke County Population Projections and Table 3: Athens-Clarke County Range of Population Projections through 2030.

The low growth scenario for Athens-Clarke County uses the projected population growth scenario developed by the economic forecasting firm of Woods and Poole. Using the Woods and Poole annual increases in population, a population of 119,601 is projected by the year 2018. Based on recent growth rates and overall historical growth for the community, staff is of the opinion that these projections are unrealistic but should be used as the low growth scenario.

The moderate growth projection for Athens-Clarke County is based on the assumption that the average annual rate of growth from 2000 through 2030 will be approximately 1.2%, with the actual annual rate of 1.5% observed from 2000-2005 slowing to an average annual rate of just under 1% by the period 2025-2030. This will result in a population of 124,631 by the year 2018. Staff recommends that these projections be initially used in establishing future population totals for the community. The community has had a relatively stable trend of population growth since 1980 and these projections take this fact into account. In addition, these population projections have been based on primary source data compiled by Athens-Clarke County Planning Department staff for use in the preparation of transportation planning documents for the Madison-Athens-Clarke-Oconee Regional Transportation Study (MACORTS), the local metropolitan planning organization (MPO) charged with overseeing local transportation planning efforts as mandated by the Georgia Department of Transportation.

The high growth scenario for Athens-Clarke County is based on local primary source population estimations developed by Athens-Clarke County Planning Department staff that set the baseline for applying the yearly compounded growth rates reflected in the MACORTS data for the period 2000-2030. This methodology results in a population of 133,477 by the year 2018. While it is possible that these population figures are reasonable, staff is of the opinion that they are less likely than the moderate projection to actually occur unless the region's economic base grows faster than the rate observed

during the 1980's/1990's. Based on an evaluation of building permit data, it appears that growth in Athens-Clarke County is occurring but is slowing. A more thorough evaluation of building permit data is given in the "Housing" section of this plan document.

Athens-Clarke County is projected to have a steady to moderate growth rate of about 4.8-7.6% every five years through the year 2030. It is projected that the overall region will continue to see rapid growth, with the Athens MSA projected to grow by 5.8-9.2% every five years through the year 2020.

1.4.2.2 Projected Population for the City of Winterville

In projecting the population for the City of Winterville, three scenarios are illustrated that reflect what is perceived as low, moderate and high growth rates. For interim planning purposes, it is recommended that the moderate growth scenario be used. As the planning process moves forward following the update of the Comprehensive Plan, this figure should be reevaluated periodically. The first opportunity to re-evaluate the accuracy of these projections will come with the completion of the national decennial census for the year 2010.

Table 4: City of Winterville Population Projections

Year	Low	Moderate	High
1980	641	641	641
1990	876	876	876
2000	1,068	1,068	1,068
2005	1,153	1,169	1,192
2010	1,175	1,195	1,223
2015	1,282	1,322	1,392
2018	1,388	1,449	1,584
2020	1,452	1,525	1,712
2028	1,521	1,605	1,858
2030	1,709	1,829	2,297
<i>Source: A-CC Planning Department 2005.</i>			

The population of Winterville has been projected in 5-year increments from the years 2000 to 2020. Also included are projections for 2018 (which is the extent of the planning period for this document), projections through 2028 for comparative purposes during the next update to the Comprehensive Plan, and a projection through 2030 which is

consistent with the population analysis used in local transportation planning documents. These population projections are shown in Table 4: City of Winterville Population Projections.

The low growth scenario for the City of Winterville uses the projected population growth scenario developed by the economic forecasting firm of Woods and Poole. Using the Woods and Poole annual increases in population, a population of 1,388 is projected by the year 2018. Based on recent growth rates and overall historical growth for the community, staff is of the opinion that these projections are possible but not likely and, therefore, they should be used as the low growth scenario.

The moderate growth projection for the City of Winterville is based on the assumption that the average annual rate of growth from 2000 through 2030 will be approximately 1.8%, with the actual annual rate of 2.38% observed from 2000-2005 slowing to an average annual rate of 1.6% by the period 2025-2030. This will result in a population of 1,449 by the year 2018. Staff recommends that these projections be initially used in establishing future population totals for the community. The community has had a relatively stable trend of population growth since 1980 and these projections take this fact into account. In addition, these population projections have been based on primary source data compiled by Athens-Clarke County Planning Department staff for use in the preparation of transportation planning documents for the Madison-Athens-Clarke-Oconee Regional Transportation Study (MACORTS), the local metropolitan planning organization (MPO) charged with overseeing local transportation planning efforts as mandated by the Georgia Department of Transportation.

The high growth scenario for the City of Winterville is based on local primary source population estimations developed by Athens-Clarke County Planning Department staff that set the baseline for the 2005 projection by applying the yearly compounded growth rates reflected in the MACORTS data for the period 2005-2030. This methodology results in a population of 1,584 by the year 2018. While it is possible that these population figures are reasonable, staff is of the opinion that they are less likely than the moderate projection to actually occur. For development to be sustained at such a high rate, Winterville's present development pattern of relatively low density housing would have to be altered to accommodate higher densities. Given the conservative values currently expressed by the community, and the policies enacted by the Winterville City Council regarding zoning and land use, Winterville is not likely to alter their relatively low-density development pattern.

1.4.3 Growth Rate comparison to other areas

In order to understand the population growth of Athens-Clarke County and the City of Winterville more thoroughly, it is necessary to place these communities in a larger context. The sections that follow compare the rate of growth and the actual growth of these two communities with other Metropolitan Statistical Areas (MSAs), with other counties, and with the state as a whole. The Athens MSA is the census-defined region used by the federal government for a variety of planning purposes such as transportation planning. The MSA is commonly recognized as the basis for regional planning. The Athens MSA is composed of the three counties of Clarke, Oconee and Madison.

Among the variables that impact population growth are changes in economic development, transportation, housing, and community facilities. Factors that can influence an area's future population growth can be external as well as internal. In fact, the development that takes place in a neighboring city or county can have a profound impact on an adjacent community's growth.

Comparisons of the rates of growth for Athens-Clarke County, City of Winterville, Athens MSA, and the State of Georgia are provided in Table 5: Rate of Growth Comparisons: Athens-Clarke County, City of Winterville, Athens MSA, State of Georgia. The growth rates for the five-year periods prior to 2005 reflect the rates identified by the U.S. Bureau of the Census. Growth rates for the five-year periods that follow 2005 were prepared using information prepared by Woods and Poole (for the Athens MSA and the State of Georgia) and from the moderate growth projections for Athens-Clarke County and the City of Winterville, included in Table 2: Athens-Clarke County Population Projections and Table 4: City of Winterville Population Projections respectively.

Table 5: Rate of Growth Comparisons: Athens-Clarke County, City of Winterville, Athens MSA, State of Georgia

Location	1980-1985	1985-1990	1990-1995	1995-2000	2000-2005	2005-2010	2010-2015	2015-2020	2020-2025	2025-2030
Athens-Clarke	8.7%	8.0%	6.9%	6.5%	7.6%	6.0%	5.6%	5.3%	5.1%	4.8%
City of Winterville	18.3%	15.4%	10.9%	8.9%	11.9%	9.6%	9.6%	8%	8%	8%
Athens MSA	10.4%	9.4%	10.3%	9.4%	9.2%	8.9%	7.5%	7%	6.6%	5.8%
Georgia	9.3%	9.3%	13.2%	13.2%	6.9%	7.2%	7.2%	7.2%	7.2%	7.2%

Source: A-CC Planning Department, 2006; US Bureau of the Census, 1980-2000; Woods & Poole Economics.

1.4.3.1 Comparison of Georgia Metropolitan Statistical Areas (MSAs) Growth Rates

As illustrated in Table 6: Population Growth for Georgia: MSAs Outside of Atlanta, the historical population growth for Georgia’s six MSAs outside of Atlanta has been relatively constant from 1980-2000. The Athens MSA has experienced the fastest growth rate of any MSA in Georgia outside of Atlanta, with regional population growth of 46.6% since 1980. This growth rate far exceeds the growth rates of the next fastest growing areas outside of the metro Atlanta region (the Augusta MSA with 29.1% and the Savannah MSA with 27.0%). Between 1980 and 2000, the Athens MSA’s total population increased by approximately 48,772. While there are many reasons for this rapid growth rate, a primary factor is the impact of the increased enrollment and overall growth of the University of Georgia, the region’s largest employer and single greatest attraction for migration into the Athens MSA.

With regard to the analysis shown in Table 6: Population Growth for Georgia: MSAs Outside of Atlanta, it should be noted that northwestern Georgia has experienced considerable growth during this period. However, this area is within the Chattanooga, Tennessee MSA. As it is difficult to isolate the Georgia portion of this MSA for statistical purposes, it is not included as part of this comparison.

Table 6: Population Growth for Georgia: MSAs Outside of Atlanta

Location	1980 Population	2000 Population	Actual Growth	% Growth (20yr)
Athens MSA	104,672	153,444	48,772	46.6
Augusta MSA	240,293	310,294	70,001	29.1
Savannah MSA	230,728	293,000	62,272	27.0
Macon MSA	272,945	322,549	49,604	18.2
Columbus MSA	207,304	224,868	17,564	8.5
Albany MSA	112,402	120,822	8,420	7.5

Source: U.S. Bureau of the Census 1980-2000.

As reflected in Table 7: Percent Population Growth for Central Counties in Georgia MSAs, Athens-Clarke County's population growth rate of 35.3% was more than double that of the next fastest growing central county (Savannah MSA's Chatham County) outside of the metro Atlanta area. While the rapid growth rates of the suburban counties in the Athens MSA receive much attention, Clarke County has experienced the most rapid growth of any comparable MSA's central county.

Clarke County's percentage of the total population growth for the Athens MSA from 1980 to 2000 is 54.3%. This represents a relatively balanced geographic distribution of population growth between the Athens MSA's central jurisdiction (Clarke County) and the bordering or outer jurisdictions to the north and south (Madison and Oconee Counties respectively) over the 20-year period. A comparative analysis of the central county's percentage of the total population growth for each MSA included in Table 6: Population Growth for Georgia: MSAs Outside of Atlanta is provided in Table 7: Percent Population Growth for Central Counties in Georgia MSAs. It may be assumed that the central counties in each MSA are the more urbanized jurisdictions within their respective MSA. Based on that single assumption, a simplistic interpretation of this data suggests that, by a slight majority, the growth within the Athens MSA during this time has been urban or suburban in nature. Conversely, nearly half of the MSA's population growth has been in Madison or Oconee Counties and has largely been suburban or rural in character.

Table 7: Percent Population Growth for Central Counties in Georgia MSAs

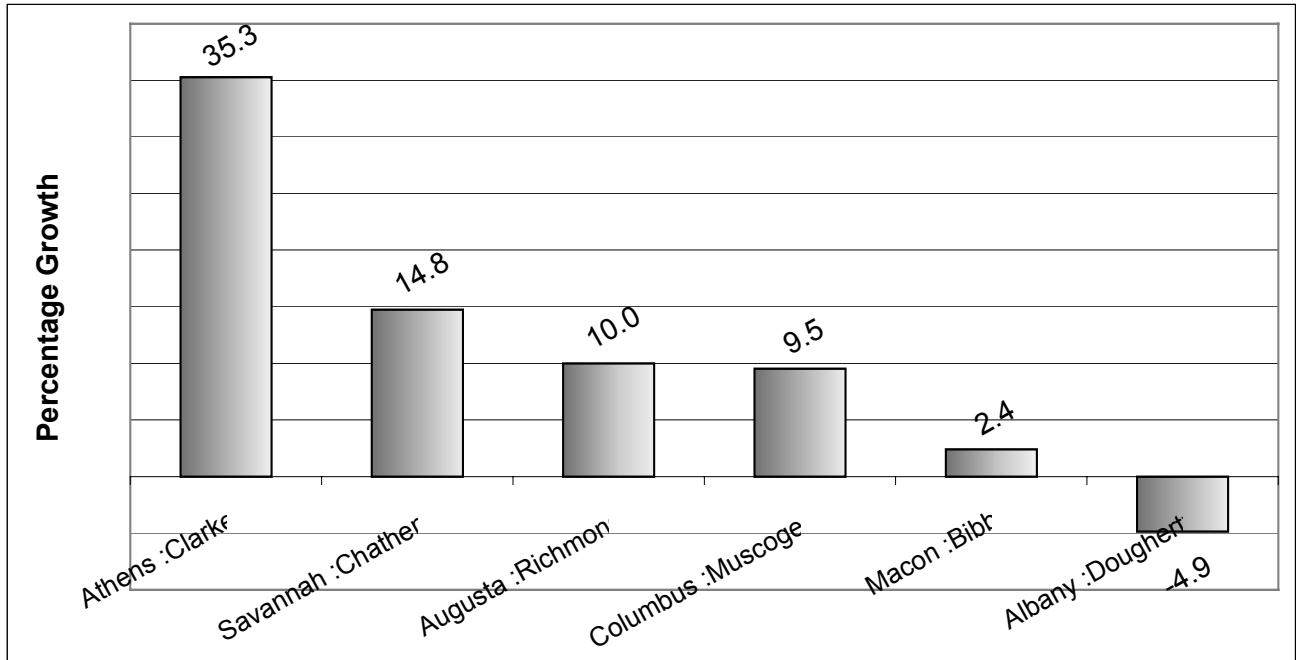


Table 8: Percent Population Growth for Central Counties in Georgia MSAs

Central County	MSA	1980 County Population	2000 County Population	Actual Central County Population Growth (1980-2000)	Central County Population Growth % (1980-2000)	Central County Population Growth as a % of MSA growth (1980-2000)
Muscogee	Columbus	170,108	186,291	16,183	9.5%	92.1%
Clarke	Athens	75,020	101,489	26,469	35.3%	54.3%
Chatham	Savannah	202,226	232,048	29,822	14.8%	47.9%
Richmond	Augusta	181,629	199,775	18,146	10.0%	25.9%
Bibb	Macon	150,256	153,887	3,631	2.4%	7.3%
Dougherty	Albany	100,920	96,020	-4,900	-4.9%	-58.2%

Source: US Bureau of the Census 1980-2000.

While many factors have contributed to this rapid regional growth rate, the most important variable is the growth in student enrollment at the University of Georgia and the associated employment growth in the community. Between 1970-1990, student enrollment at the University of Georgia increased by 8,276, or 37.8%, to over 30,000 students. Since 1990, enrollment at the University of Georgia has increased slightly from 30,170 in 1990 to 32,154 for spring semester in 2006. In addition, Athens-Clarke County's role as the cultural and commercial center of Northeast Georgia has expanded and local population growth has followed this trend.

1.4.3.2 Comparison of Athens MSA Member County Growth Rates

One of the most significant regional population growth issues has been the rapid growth rate of both Madison County and Oconee County (see Table 9: Population Growth 1980-2000 Athens-Clarke County, City of Winterville, Athens MSA, State of Georgia). Both of these MSA counties have experienced aggressive growth rates that have approximated the state average for the same period.

Table 9: Population Growth 1980-2000 Athens-Clarke County, City of Winterville, Athens MSA, State of Georgia

Location	1980	1985	1990	1995	2000	Actual Change	% Change 1980-2000
Athens-Clarke County	75,020	81,540	88,060	94,163	100,266	25,246	33.7%
City of Winterville	641	759	876	972	1,068	427	66.6%
Oconee County	12,427	15,023	17,618	21,922	26,225	13,798	111.0%
Madison County	17,747	19,399	21,050	23,390	25,730	7,983	45.0%
Athens MSA	104,672	115,467	126,262	139,853	153,444	48,772	46.6%
State of Georgia	5,462,982	5,970,599	6,478,216	7,332,335	8,186,453	2,723,471	49.9%

Source: US Bureau of the Census, 1980-2000.

With a growth rate of 111.0% since 1980, Oconee County is one of the fastest growing counties in the state of Georgia. Among the factors contributing to this rapid growth rate are: 1) the close proximity of the area to Athens-Clarke County (with many of the

subdivisions in Oconee County being within 10 minutes of the Athens Central Business District and UGA), 2) the availability of large tracts of undeveloped land, and 3) what is perceived by many people to be a strong public school system.

While Madison County and Oconee County have both experienced rapid population growth from a percentage standpoint, the majority of the numerical increase in the region's population between 1980-2000 has occurred in Athens-Clarke County. Between 1980-2000, the Athens MSA increased in population by 48,772. Of this regional population increase, 25,246 or 51.8%, occurred in Athens-Clarke County. In 1990, 69.7% of the region's population lived in Athens-Clarke County.

Although the growth rate for Athens-Clarke County for this same period is approximately 16% slower than that of the state, the community's growth rate of 33.7% is still fairly robust for an established urban area. The City of Winterville has also seen a significant percentage increase in population. Between 1980 and 2000, Winterville's population grew by almost 66.6%. The growth rates for both Athens-Clarke County and the City of Winterville are the result of several macro forces, including the relative economic prosperity of the Southern U.S. and the booming economy of Georgia in particular. The micro forces contributing to this continued growth include the steady growth of the University of Georgia over this period, increased local job opportunities, and the general advancement of Athens as the center of commerce and culture for Northeast Georgia.

1.4.4 Household Characteristics

The past, current and future number of households for the years 1980 through 2020 are illustrated in Table 10: Historical and Projected Household Growth for Athens-Clarke County, 1980 - 2020. The average household sizes for the years 1980 through 2030 are given in Table 11: Historical And Projected Average Household Size for Athens-Clarke County, City of Winterville, Athens MSA, State of Georgia, 1980 - 2020. The number and size of households are important in regard to identifying future housing and socio-economic needs.

The number of projected households and their size should be coordinated with the number and type of housing units needed to ensure that future household needs are met. Increasingly, more households have two people earning incomes. The family structure has dramatically changed over the years, creating more households with fewer people in each household. The number of households is increasing faster than the total population, thus resulting in smaller household sizes. Additionally, the

increase in elderly population is expected to contribute to the overall decrease in average household size.

1.4.4.1 Household Characteristics for Athens-Clarke County

Athens-Clarke County experienced a 46% increase in number of households, or an increase of 12,358 total households, from 1980 to 2000, as shown in Table 10: Historical and Projected Household Growth for Athens-Clarke County, 1980 - 2020. Between 2000-2020, Athens-Clarke County is projected to add 9,962 households. It is projected that the number of households will increase by approximately 25.4% between 2000-2020.

As reflected in Table 11: Historical And Projected Average Household Size for Athens-Clarke County, City of Winterville, Athens MSA, State of Georgia, 1980 - 2020, the average household size for Athens-Clarke County is projected to decrease from 2.4 persons per household in 1990 to approximately 2.26 by the year 2020. It should be noted that Athens-Clarke County has historically had a significantly lower household size than both the state of Georgia and the Athens MSA. This smaller household size is due to the community's comparatively unique population characteristics, which includes the predominantly unmarried student population of the University of Georgia, as well as a relatively small number of households with children.

1.4.4.2 Household Characteristics for the City of Winterville

Winterville experienced a 72.3% increase in number of households, or a total increase of 172, from 1980 to 2000 as shown in Table 10: Historical and Projected Household Growth for Athens-Clarke County, 1980 - 2020. Between 2000-2020, Winterville is projected to add 240 households. This increase represents just over a 58.7% increase in households between 2000-2020.

As reflected in Table 11: Historical And Projected Average Household Size for Athens-Clarke County, City of Winterville, Athens MSA, State of Georgia, 1980 - 2020, the average household size for Winterville decreased by 4.5% between 1980 and 2000. This trend is predicted to continue through 2020 as well. Winterville's average household size is projected to decrease from 2.52 persons per household in 2000 to approximately 2.35 by the year 2020. It should be noted that Winterville has historically had a smaller average household size than both the state of Georgia and the Athens MSA. This smaller household size is due to the community's comparatively unique population

characteristics, which includes a relatively older population who typically have fewer children living with them than the state or MSA averages.

It is interesting to note that Winterville’s average household size has historically been, and is projected to continue to be, larger than Athens-Clarke County’s average household size. This is largely due to Athens-Clarke County’s unusually small average household size resulting from the considerable number of students in the community. One factor that may alter the forecast for Winterville’s average household size is Winterville’s role as an outer suburb, or “bedroom community,” for the rapidly urbanizing Athens area. It is possible that Winterville’s average household size will draw even with Athens-Clarke County in the near future and could actually be smaller than Athens-Clarke’s by 2020 if Winterville attracts “empty nesters,” retirees, and even younger couples without children. Trends in the next five years will likely clarify whether Winterville’s average household size will remain larger than Athens-Clarke County’s, or if it will become smaller.

Table 10: Historical and Projected Household Growth for Athens-Clarke County, 1980 - 2020

Year	Athens-Clarke County	City of Winterville
1980	26,881	237
1985	30,417	285
1990	33,471	326
1995	36,267	368
2000	39,239	409
2005	41,441	469
2010	44,028	496
2015	46,615	555
2020	49,201	649
<i>Source: U.S. Census, 1980- 2000; A-CC Planning Department, 2006.</i>		

Table 11: Historical And Projected Average Household Size for Athens-Clarke County, City of Winterville, Athens MSA, State of Georgia, 1980 - 2020

Year	Athens-Clarke County	City of Winterville	Athens MSA	Georgia
1980	2.48	2.64	2.8	2.84
1985	2.43	2.56	2.7	2.74
1990	2.40	2.57	2.6	2.66
1995	2.38	2.48	2.5	2.63
2000	2.35	2.52	2.46	2.65
2005	2.33	2.49	2.43	2.61
2010	2.30	2.41	2.42	2.58
2015	2.28	2.38	2.41	2.51
2020	2.26	2.35	2.42	2.47

Source: US Bureau of the Census, 1980-2000; Woods and Poole 2005 Data Pamphlet.

1.5 Age Distribution

Several national trends are impacting demographic characteristics of the populations of Athens-Clarke County and the City of Winterville. The most important of these is the aging of what is known as the “baby boom” generation. This age group of people born between 1946 and 1964 will impact the demand for a variety of services and products. A second major trend impacting the age of the community is the longer average life span for people in general. In addition, the regional and local trend is for sustained growth among college-aged residents and young professionals drawn to the southeastern United States and the Athens area in particular.

1.5.1 Age Groupings (Past – Present)

The following sections provide population data for Athens-Clarke County and the City of Winterville arranged by age groupings identified by the US Census.

1.5.1.1 Athens-Clarke County Age Groupings (Past – Present)

Historically, Athens-Clarke County has had a relatively young population. Among the major factors impacting the average age of the population is the location of the University of Georgia in the community. With over 30,000 college students, Athens will

likely continue to have a disproportionately large number of residents in the 15 to 24 age group. It is interesting to note, however, that the percentage of the total population that the 15-24 age group represented in Athens-Clarke County decreased between 1980 and 2000 from 34.3% to 28.8%. This reduction has been attributed to an overall growth in population in all age groups without a significant, or statistically equal, increase in enrollment at the University of Georgia.

Table 12: Population by Age Group for Athens-Clarke County, 1980-2000

Age Group	1980		1985		1990		1995		2000	
	No. of Persons	% of total	No. of Persons	% of total	No. of Persons	% of total	No. of Persons	% of total	No. of Persons	% of total
0 - 4	4,583	6.1%	4,806	5.9%	5,543	6.3%	5,824	6.3%	5,976	6.0%
5 - 14	8,517	11.4%	7,797	9.6%	9,011	10.2%	10,520	11.3%	11,459	11.6%
15- 24	25,559	34.3%	27,480	33.8%	25,432	28.8%	27,330	29.3%	28,459	28.8%
25 - 34	13,266	17.8%	14,655	18.1%	16,091	18.2%	15,040	16.1%	14,067	14.2%
35- 44	6,624	8.9%	8,023	9.9%	10,566	12.0%	12,468	13.4%	14,086	14.3%
45 - 54	5,246	7.0%	5,753	7.1%	7,104	8.0%	8,386	9.0%	10,026	10.2%
55 - 64	4,850	6.5%	5,313	6.5%	5,560	6.3%	5,339	5.7%	6,154	6.3%
64 +	5,914	7.9%	7,402	9.1%	9,008	10.2%	8,275	8.9%	8,555	8.6%

Source: Bureau of the Census, 1980-2000, Mid census extrapolations by the A-CC Planning Department, 2005.

1.5.1.2 City of Winterville Age Groupings (Past – Present)

Historically, the City of Winterville has had a slightly older population than the state of Georgia, and considerably older than Athens-Clarke County. To a large extent, Winterville has remained unaffected by the presence and growth of the University of Georgia. As a result, this small community has historically attracted and retained a relatively older and more homogeneous population.

Table 13: Population by Age Group for the City of Winterville, 1980-2000

Age Group	1980		1985		1990		1995		2000	
	Pop.	% of total	Pop	% of total	Pop	% of total	Pop	% of total	Pop	% of total
0 - 4	46	7.2%	61	8.0%	76	8.7%	99	9.1%	107	10.1%
5 - 14	86	13.4%	116	15.3%	146	16.7%	166	15.2%	145	13.6%
15- 24	123	19.2%	113	14.9%	103	11.8%	120	11.0%	110	10.3%
25 - 34	113	17.6%	134	17.7%	155	17.7%	214	19.6%	224	20.9%
35- 44	67	10.5%	109	14.4%	151	17.2%	213	19.5%	234	21.8%
45 - 54	44	6.9%	68	9.0%	91	10.4%	106	9.7%	95	8.9%
55 - 64	66	10.3%	61	8.0%	56	6.4%	58	5.3%	46	4.3%
64 +	96	15.0%	96	12.7%	98	11.2%	116	10.6%	107	10.1%

Source: Bureau of the Census, 1980-2000, Mid census extrapolations by the A-CC Planning Department, 2005.

1.5.2 Future Projections

The inventory and assessment of a community's age distribution is important in terms of identifying present and future community service needs. Planning for capital facilities and services such as schools, recreation facilities/programs, youth centers and programs for the elderly all depend upon the age distribution of a community Table 14: Population by Age Group Athens-Clarke County, 2005-2030 and Table 15: Population by Age Group, City of Winterville, 2005-2030 illustrate the past, present and projected age categories for Athens-Clarke County and the City of Winterville.

1.5.2.1 Athens-Clarke County Future Projections

It is projected that between 2005-2030, an additional 4,481 people above the age of 54 will live in Athens-Clarke County. This will have a modest impact on the demand for community services. This aging population will also impact transportation planning as it relates to the demand for para-transit services as provided by the Athens Transit System.

While the older segment of the population is expected to grow, significant growth is also expected to occur in the younger segments of the population. Between 2005-2030, it is expected that an additional 10,993 people between the ages of 15-24 will live in the county. This population increase will impact the provision of community services, such

as high schools and other education and job training facilities, and the provision of affordable entry-level housing.

While there are several demographic trends that will impact the community, one of the major trends that will need to be addressed in community plans is expected growth in the population age groups 15-24 and 55+ years. The growth of these two age categories may disproportionately impact demand for certain community services and resources. Between 2005-2030, it is expected that these categories combined will increase from 51,952 to 67,426 people.

Table 14: Population by Age Group Athens-Clarke County, 2005-2030

Age Group	2005		2010		2015		2020		2025		2030	
	Pop.	% of total	Pop	% of total	Pop	% of total	Pop	% of total	Pop	% of total	Pop	% of total
0 - 4	5,612	5%	5,946	5%	6,280	5%	6,615	5%	7,163	5%	7,283	5%
5 - 14	10,468	10%	11,092	10%	11,715	10%	12,339	10%	13,362	10%	13,586	10%
15- 24	36,908	34%	39,106	34%	41,305	34%	43,503	34%	47,112	34%	47,901	34%
25 - 34	17,677	16%	18,730	16%	19,783	16%	20,836	16%	22,564	16%	22,942	16%
35- 44	11,893	11%	12,601	11%	13,309	11%	14,018	11%	15,180	11%	15,435	11%
45 - 54	10,295	10%	10,909	10%	11,522	10%	12,135	10%	13,142	10%	13,362	10%
55 - 64	6,313	6%	6,689	6%	7,065	6%	7,441	6%	8,059	6%	8,194	6%
64+	8,731	8%	9,251	8%	9,771	8%	10,291	8%	11,144	8%	11,331	8%

Source: Bureau of the Census, 2000, Mid census extrapolations by the A-CC Planning Department, 2005.

1.5.2.2 City of Winterville Future Projections

While there are several demographic trends that will impact the community, one of the major trends that will need to be addressed in community plans is expected growth in the population aged 55 years and older. This age category tends to have a disproportionate impact on the demand for community services, medical facilities, and other needs unique to an aging population. Between 2000-2030, it is expected that this category will increase from 17.5% of Winterville’s population to 23.9%. In addition, the 0-4 and 5-14 age groups are predicted to decrease from 24.6% in 2000 to 19.2% in 2030.

This is due in large part to the decrease in the number of young families that are traditionally found in the 25 – 44 age group.

Table 15: Population by Age Group, City of Winterville, 2005-2030

Age Group	2005		2010		2015		2020		2025		2030	
	Pop.	% of total	Pop.	% of total	Pop.	% of total	Pop.	% of total	Pop.	% of total	Pop.	% of total
0 - 4	122	10.2%	135	9.1%	148	8.6%	161	8.3%	174	7.4%	187	6.3%
5 - 14	163	14%	180	15.3%	197	14.8%	214	14.5%	231	13.9%	249	12.9%
15- 24	123	12.1%	136	13.4%	149	14.4%	162	14.2%	175	14.3%	188	13.1%
25 - 34	258	19.3%	286	18.4%	313	17.9%	340	17.3%	368	16.9%	395	16.3%
35- 44	262	18.6%	290	17%	317	15.4%	345	15.7%	373	16.6%	401	18.6%
45 - 54	106	8.3%	118	9.1%	129	9.5%	140	9.1%	151	8.6%	163	8.9%
55 - 64	51	5.2%	57	4.8%	62	5.6%	68	5.3%	73	6.2%	79	6.5%
64+	120	12.3%	132	12.9%	145	13.8%	158	15.6%	170	16.1%	183	17.4%

Source: Bureau of the Census, 1980-2000, Mid census extrapolations by the A-CC Planning Department, 2005.

1.5.2.3 Median Age Projections

The following section outlines the past trends and projected median ages for Athens-Clarke County and the City of Winterville, as well as the state of Georgia.

Historically, Athens-Clarke County has had a relatively young population. Among the major factors impacting the average age of the population is the location of the University of Georgia in the community. With over 30,000 college students, Athens will likely continue to have a median age that is lower than the state as a whole. As illustrated in Table 16: Median Age in Athens-Clarke County, City of Winterville, and the State of Georgia, in 1980 Athens-Clarke County had a median age of 24.4 years compared to the state figure of 28.6. By 1990 the median age for Athens-Clarke County was 25.6 years and 31.6 years for the state of Georgia. It is expected that the community’s median age will hold relatively constant through 2010 and then decrease through 2030. The rate of change in the median age was substantially higher in the state than Athens-Clarke County. Between 1980 and 2005, the median age for the state

as a whole increased by 15%. This increase was over three times as fast as the 4.5% increase in the median age for Athens-Clarke County during the same period.

Historically, the City of Winterville has had a slightly older population than the state of Georgia, and considerably older than Athens-Clarke County. To a large extent, Winterville has remained unaffected by the presence and growth of the University of Georgia. As a result, this small community has historically attracted and retained a relatively older and more heterogeneous population. As illustrated in Table 16: Median Age in Athens-Clarke County, City of Winterville, and the State of Georgia, in 1980 the City of Winterville had a median age of 30.6 years compared to the state figure of 28.6. By 1990 the median age for Winterville was 32.5 years and 31.6 years for the state of Georgia. While it is expected that the community’s median age will continue to increase, it is projected that it will increase at a much faster rate than that of the past 20 years for the City of Winterville.

Table 16: Median Age in Athens-Clarke County, City of Winterville, and the State of Georgia

Year	Athens-Clarke County	City of Winterville	State of Georgia
1980	24.4	30.6	28.6
1985	24.9	31.5	30.1
1990	25.6	32.5	31.6
1995	26.2	33.4	33.1
2000	25.4	36.6	33.4
2005	25.5	34.8	32.9
2010	25.1	37.2	33.4
2015	25.0	37.7	33.6
2020	24.6	39.4	33.9
2025	24.5	40.3	34.1
2030	24.2	41.7	34.4
% Change 1980-2005	4.5 %	13.7%	15%
% Change 2005-2030	- 5.1%	19.8%	4.6%

Source: U.S. Census, 1980-2000 Woods and Poole, 2003

1.5.3 Identification of Implications for the Community

The relative aging of the population in both Athens-Clarke County and the City of Winterville will likely result in an increased demand for health services, transit services, and diversified recreational and cultural opportunities that are suited to the needs of citizens aged 55 years and older. Within Athens-Clarke County, it is projected that there will also be an increase among 15 to 24 year olds that will likely result in increased demand for park space, high school facilities, job training and higher education opportunities. The City of Winterville is likely to remain a “bedroom community” to Athens, and attract young professionals without children as well as “empty nesters” and individuals at or beyond retirement age.

1.6 Race and Ethnicity

In an evaluation of the racial characteristics of the population and regional growth trends, several important trends are illustrated. These tables reflect trends in the rapid growth rate of white populations in Madison County and Oconee County that is well above the state average. The lack of growth in the black population in these counties is also noteworthy. In addition, the growth of the Hispanic and Latino population within all of the Athens MSA jurisdictions, with the exception of Winterville, is consistent with a regional and national trend toward marked increases in the percentage of the population with Hispanic or Latino heritage.

1.6.1 Racial and Ethnic Composition (Past – Present)

1.6.1.1 Racial Characteristics for Athens-Clarke County

Athens-Clarke County has experienced strong population growth in the African-American population between 1980-2000. The 59.1% increase during the period was below the statewide increase of 63.4%. The actual African-American population in Athens-Clarke County increased from 17,565 to 27,945 between 1980 and 2000.

The 35.2% increase in white population between 1980-2000 for the Athens MSA was comparable with the state figure of 37.1%. For Athens-Clarke County, white population increased by 10,639 people between 1980-2000. This growth rate of 19.2% was almost half the state figure of 37.1%. It is projected that the future proportion of White population in Athens-Clarke County is projected to go down relative to the percentage of other racial population categories such as African-American, Hispanic and Latino, and other ethnic groups.

1.6.1.2 Racial Characteristics for the City of Winterville

The City of Winterville’s White population increased by 49 people between 1990-2000. This growth rate of 6.1% lags behind the state figure of 37.1%. It is projected that the future proportion of White population in Winterville is projected to continue to increase along this same trend.

Between 1970-1990, the City of Winterville’s African-American population saw a slight overall decrease (9.7%). The majority of this decrease appears to have occurred between 1970 and 1975, after which the African-American population rebounded strongly just prior to 1990. It is predicted that the African-American population will grow slightly, a 0.5% increase, as a percentage of total population between 1990 and 2020. Table 21: 2000 Comparative Race and Ethnic Population Composition for Athens MSA, Athens-Clarke County and the City of Winterville, illustrates future population racial breakdown by jurisdiction.

In 1980, Winterville had only six residents listed in the “Other” category. By 2000, that number had increased to 24. It is predicted that the 2000 number, which represents 2.0% of the total population, will be reduced to 1.7% of the total population of Winterville by 2020.

**Table 17: Historical Population Growth by Racial Category – White Population
Athens-Clarke County, City of Winterville, Athens MSA, State of Georgia, 1980-2000**

Location	1980	1985	1990	1995	2000	Actual Change	% Change 1980-1990
Athens-Clarke	55,418	58,148	60,878	62,215	66,057	10,639	19.2%
City of Winterville	na	na	802	823	851	49	6.1%
Oconee County	11,402	13,806	16,210	19,805	23,688	11,998	107.7%
Madison County	16,207	17,654	19,100	21,050	23,133	6,926	42.7%
Athens MSA	83,027	89,769	96,510	103,310	112,247	29,220	35.2%
State of Georgia	3,948,797	4,256,993	4,565,190	4,885,430	5,412,371	1,463,574	37.1%

Source: Bureau of the Census, 1980-2000, Mid census extrapolations by the A-CC Planning Department, 2005.

Table 18: Historical Population Growth by Racial Category – African-American Population Athens-Clarke County, City of Winterville, Athens MSA, State of Georgia, 1980-2000

Location	1980	1985	1990	1995	2000	Actual Change	% Change 1970-1990
Athens-Clarke	17,565	20,250	22,935	25,440	27,945	10,380	59.1%
City of Winterville	12	14	47	124	201	189	1,675.0%
Oconee County	1,268	1,291	1,315	1,523	1,731	463	36.5%
Madison Co.	1,942	1,895	1,849	2,033	2,216	274	14.1%
Athens MSA	20,775	23,436	26,099	28,807	31,515	15,543	97.3%
State of GA	1,464,435	1,605,500	1,746,565	2,069,995	2,393,425	928,990	63.4%

Source: Bureau of the Census, 1980-2000, Mid census extrapolations by the A-CC Planning Department, 2006.

Table 19: Historical Population Growth by Racial Category – Other Population Athens-Clarke County, City of Winterville, Athens MSA, State of Georgia 1980-2000

Location	1980	1985	1990	1995	2000	Actual Change	% Change 1980-2000
Athens-Clarke	1,101	1,915	2,730	5,264	7,798	6,697	608.3%
City of Winterville	6	7	17	21	24	18	300%
Oconee County	31	90	149	599	1,049	1,018	3,183.9%
Madison County	17	84	150	409	667	650	3,823.5%
Athens MSA	1,149	2,089	3,029	6,284	9,538	8,389	730.1%
State of Georgia	49,087	82,416	131,503	317,749	503,996	454,909	926.7%

Source: Bureau of the Census, 1980-2000, Mid census extrapolations by the A-CC Planning Department, 2006.

1.6.2 Future Projections

Table 20: Historical and Projected Racial Composition, 1980-2020

Year	Athens-Clarke County			City of Winterville			State of Georgia		
	White	African-American	Other	White	African-American	Other	White	African-American	Other
1980	74.7%	23.6%	1.7%	97.1%	1.9%	1.0%	72.3%	26.8%	0.9%
1985	72.4%	24.7%	2.9%	97.0%	2.0%	1.0%	71.6%	26.9%	1.5%
1990	70%	25.9%	4.1%	91.5%	7.1%	1.4%	71%	27%	2%
1995	67.2%	28.6%	4.2%	86.4%	11.9%	1.7%	68.3%	27.9%	4.1%
2000	64.7%	30.8%	4.5%	79.7%	18.8%	1.5%	65.1%	28.7%	6.2%
2005	61.8%	33.3%	4.9%	78.9%	19.5%	1.6%	N/A	N/A	N/A
2010	59.4%	35.1%	5.5%	78.0%	20.2%	1.8%	N/A	N/A	N/A
2015	57%	36.8%	6.2%	77.8%	20.8%	1.4%	N/A	N/A	N/A
2020	55%	38.1%	6.9%	77.2%	21.1%	1.7%	N/A	N/A	N/A

Source: US Bureau of the Census, 1980-2000, Woods and Poole, 2003.

1.6.3 Comparison to Other Areas

The trends in percentage racial composition of Athens-Clarke County and the City of Winterville have remained constant over the past twenty years. Each community has witnessed an increase in the African-American portion of their populations, and the overall percentage of white population has decreased while the actual growth among the white racial category has remained relatively constant. Athens-Clarke County, like many other central MSA jurisdictions, has experienced significant growth in Hispanic and Latino population.

The following table compares the overall racial and ethnic composition of the Athens MSA, Athens-Clarke County, and the City of Winterville for the year 2000. These same racial breakdowns represented here tend to appear with relative consistency in all of the non-metro Atlanta MSAs.

Table 21: 2000 Comparative Race and Ethnic Population Composition for Athens MSA, Athens-Clarke County and the City of Winterville

Race or Ethnic Group	Athens MSA		Athens-Clarke County		City of Winterville	
	Actual Population	% of Total	Actual Population	% of Total	Actual Population	% of Total
White	108,572	70.8%	61,943	61.8%	841	77.9%
Black or African-American	31,496	20.6%	27,607	27.5%	202	18.7%
Hispanic or Latino	7,619	5.0%	6,152	6.1%	3	0.3%
Asian	3,825	2.4%	3,214	3.2%	4	0.4%
American Indian or Alaskan Native	351	0.2%	194	0.2%	2	0.1%
Other	1,581	1.0%	1,164	1.2%	28	2.6%

Source: U.S. Census Bureau, 2000.

1.6.4 Identification of Implications for the Community

Between 1980-2000, Athens-Clarke County experienced White population growth that was lower than the state increase, while African-American and Other racial and ethnic populations increased at a modest rate similar to the rates and actual growth seen in surrounding counties and at the state level. The growth of the African-American and Other racial and ethnic populations is consistent with similar trends witnessed around the state, the southeastern United States, and the nation as a whole. The greatest single issue that this trend identifies is the need for Spanish-language services and support for the considerable growth witnessed among the Hispanic population.

1.7 Income Characteristics

Per capita income is the total personal income of the residents divided by the resident population of that area. Per capita income serves as an indicator of consumer markets and of the income level of area residents. This measure can vary widely from county to county and should be used with caution.

From a regional standpoint, both Madison County and Oconee County have experienced income growth that exceeded the state average between 1969-1989. Madison County experienced a 426% growth rate while Oconee County's per capita income increased by 596%. Oconee County's 1990 per capita income of \$15,164 exceeded the state average.

1.7.1 Income Characteristics for Athens-Clarke County

Athens-Clarke County's per capita income and household income figures are lowered by the large population of students at the University of Georgia. The majority of these students do not work full-time. However, per capita income has increased in Athens-Clarke County by a figure of 328% between 1969-1989 to \$11,604. This increase, however, is significantly less than the 414.6% figure that the state of Georgia experienced in per capita income growth. Furthermore, Athens-Clarke County's per capita income is only approximately 85% of the state figure of \$13,631. While the large number of students explains the low per capita income relative to other areas, the relatively slow rate of income growth is an area that should be evaluated in further studies.

Household income data illustrates similar findings such as those identified above. Household income for Clarke County increased during the period from 1970-1990 but at a slower rate than the state of Georgia and other MSA counties. Furthermore, the 1990 median household income for Athens-Clarke County of \$20,806 is only 71.7% of the state figure of \$29,021. From a regional standpoint, Oconee County's median income is approximately 19% higher than the state figure.

The distribution of households by income groups for Athens-Clarke County and the state is illustrated in Table 23: Median Household Income, 1980-2000 and Table 24: Distribution of Households by Income for Athens-Clarke County, City of Winterville, and Georgia. In 1999, 27% of households in Athens-Clarke earned less than \$10,000 a year, compared to 16.8 percent of all households statewide. Athens-Clarke County's large percentage of households with incomes below \$14,999 may in part be explained by a high population of University students. Over 39.0% of Athens-Clarke County's population made less than \$14,999, as compared to 25.4% for the state as a whole. Additionally, only 16.2 percent of the households in Athens-Clarke made above \$50,000, compared to 22.8 percent for the state as a whole. Commuting patterns of upper income households suggest that many people earning higher wages in Athens-Clarke County actually live in neighboring counties, Oconee County in particular.

1.7.2 Income Characteristics for the City of Winterville

Winterville's per capita income and household income figures have been higher on average than those of Athens-Clarke County and the state of Georgia. As illustrated by

Table 22: Per Capita Income, 1979-1999, per capita income has increased in Winterville by a figure of \$7,404, or 113%, between 1979-1989 to \$13,958. This percentage increase is nearly identical to the figure for the state over the same period.

As found in Table 23: Median Household Income, 1980-2000, median household income for the City of Winterville increased during the period from 1980-1990 by \$11,358, an increase of 65.0%. Although robust, this was at a slower rate than the state of Georgia, which saw an increase of \$13,988, or 93.0%.

The distribution of households by income groups for Winterville is illustrated in Table 24: Distribution of Households by Income for Athens-Clarke County, City of Winterville, and Georgia. In 1989, 9.0% of Winterville households earned less than \$10,000 a year, compared to 27.0% in Athens-Clarke and 16.8 percent of all households statewide. Most notably, 74.0% of Winterville households earned between \$15,000 and \$74,999, as compared to 53.9% in Athens-Clarke and 66.1% of all households statewide. These figures indicate that the majority of Winterville’s population is centered in the lower to upper middle income groups.

Table 22: Per Capita Income, 1979-1999

Location	1979	1989	1999	% Change 1979-1999
Athens-Clarke County	\$6,192	\$11,604	\$17,103	176.2%
City of Winterville	\$6,554	\$13,958	\$18,693	185.2%
Madison County	\$5,266	\$10,997	\$16,998	222.8%
Oconee County	\$6,708	\$15,164	\$24,153	260.0%
Georgia	\$6,402	\$13,631	\$21,154	230.4%

Source: US Bureau of the Census, 1980-2000.

Table 23: Median Household Income, 1980-2000

Location	1980	1985	1990	1995	2000	% Change 1980-2000
Athens-Clarke Co.	\$12,381	\$16,593	\$20,806	\$24,462	\$28,118	127.1%
City of Winterville	\$17,481	N/A	\$28,839	\$38,283	\$47,727	173.0%
Madison County	\$15,697	\$17,174	\$22,524	\$29,436	\$36,347	131.6%
Oconee County	\$17,236	\$25,901	\$34,566	\$44,889	\$55,211	220.3%
Georgia	\$15,033	\$22,027	\$29,021	\$35,727	\$42,433	182.3%

Source: US Bureau of the Census, 1970-1990, mid-census extrapolations by A-CC Planning Department, 1998.

Table 24: Distribution of Households by Income for Athens-Clarke County, City of Winterville, and Georgia

Income Categories	Athens-Clarke County	City of Winterville	Georgia
<\$9,999	20.8%	5.4%	10.1%
\$10,000 - \$14,999	9.3%	3.0%	5.9%
\$15,000 - \$24,999	15.5%	6.5%	12.3%
\$25,000 - \$34,999	12.5%	12.9%	12.6%
\$35,000 - \$49,999	14.4%	25.0%	16.7%
\$50,000 - \$74,999	13.6%	25.3%	19.7%
\$75,000 - \$99,999	5.6%	15.1%	10.4%
\$100,000 - \$149,999	5.4%	5.9%	7.8%
\$150,000 and above	2.9%	1.1%	4.6%

Source: U.S. Census, 2000.

According to the 2000 Census, approximately 25.8% of Athens-Clarke County residents are shown to earn incomes below the poverty level. This percentage of total population with incomes below the poverty level equates to 26,260 people. The 2000 Census also notes that 15,683 of these people (approximately 60% of those with incomes below the poverty level) are essentially single individuals that are not a part of a household with a spouse or children. In addition, the 2000 Census also indicates that 20,844 (79.4%) of the individuals with incomes below poverty level are between the ages of 18 and 64. The 18

– 64 age grouping is typically also used to identify those individuals within the workforce. Further analysis of this data is needed to reach any definitive conclusions.

1.8 Educational Attainment

One of the most critical measures of an area’s population is the level of educational attainment achieved by its residents. By virtue of the presence of the University of Georgia, as well as other public and private post-secondary educational institutions, within Athens-Clarke County and the Athens MSA, both Athens-Clarke County and the City of Winterville enjoy relatively high educational attainment levels for most of their respective citizens.

1.8.1 Trends and Comparison to Other Areas

Overall educational characteristics are illustrated by Table 25: Educational Attainment Comparison Highest Educational Level Completed for Persons Age 25 and Older Athens-Clarke County has one of the highest educational levels in the state. According to the 2000 Census, 37.5% of the population aged 25 years and over has at least 4 years of college. This figure is almost double the state figure of 19.3%. Moreover, in 2000 80.9% of Athens-Clarke County residents had completed at least 4+ years of high school, as compared to 78.6% of all residents for the entire state.

Educational attainment data for the population of Winterville is similar to the Athens-Clarke County data. According to the 2000 Census, 39.3% of the population aged 25 years and over has at least 4 years of college. This figure is more than double the state figure of 19.3%. Moreover, in 2000 88.1% of Winterville residents had completed at least 4+ years of high school, as compared to 78.6% of all residents for the entire state.

Table 25: Educational Attainment Comparison Highest Educational Level Completed for Persons Age 25 and Older

Years Completed	Athens-Clarke County			City of Winterville			State of Georgia		
	1980	1990	2000	1980	1990	2000	1980	1990	2000
Elementary School (0-8 yrs)	17.3%	9.8%	7.2%	20.7%	9.8%	3.7%	23.7%	12%	7.6%
High school (1-3 yrs)	15.3%	13.1%	11.9%	19.2%	13.1%	8.2%	19.9%	17%	13.8%
High School (Graduate)	20%	22.6%	21.5%	26.3%	27.2%	28.2%	28.5%	29.7%	28.7%
College (1-3 yrs)	12.4%	16.9%	19.4%	12.6%	21.4%	28.1%	13.3%	22%	25.6%
College (Graduate & Post-Grad)	35%	37.5%	40.0%	21.2%	28.4%	31.8%	14.6%	19.3%	24.3%
<i>Source: US Bureau of the Census, 1970-1990.</i>									

1.8.2 Identification of Implications for the Community

The residents of both Athens-Clarke County and the City of Winterville exceed the state average in education attainment levels, both in terms of high school completion and four or more years of college education. This unusually high concentration of people with advanced levels of education, particularly with regard to college graduates and those completing post-graduate work, is directly correlated to the University of Georgia as well as the other smaller public and private post-secondary education institutions. As a result, Athens-Clarke County has a highly educated workforce. This is an important consideration in Athens-Clarke County's ongoing economic development efforts to attract and retain employers and moderate to high-paying jobs. Another issue related to the relatively high number of people in the workforce with advanced levels of education is that, due to the limited number of jobs requiring advanced degrees or specialized training, many of these highly-skilled members of the workforce are employed in jobs requiring little to no training. As a result, access to these lower-skilled positions is further restricted to those members of the community that would otherwise be eligible for these employment opportunities.