

Athens-Clarke County and
The City of Winterville

Community Assessment

Chapter Two:

Economic Development

July 12, 2006

CHAPTER 2: ECONOMIC DEVELOPMENT

TABLE OF CONTENTS

- CHAPTER 2: ECONOMIC DEVELOPMENT..... 2
 - 2.1 LIST OF TABLES 3
 - 2.2 INTRODUCTION..... 4
 - 2.2.1 *City of Winterville Economic Development* 4
 - Economic Base* 5
 - 2.2.2 *Employment by Industry*..... 5
 - 2.2.3 *Comparison to State*..... 9
 - 2.2.4 *Comparison to Nation*..... 15
 - 2.3 LABOR FORCE 18
 - 2.3.1 *Occupations* 19
 - 3.3.1.1 *Per Capita Income*..... 19
 - 2.4 ECONOMIC RESOURCES 25
 - 2.4.1 *Economic Development Agencies* 25
 - 2.4.2 *Economic Development Programs and Tools* 28
 - 2.4.3 *Education Training*..... 30
 - 2.5 ECONOMIC TRENDS 32
 - 2.5.1 *Sector Trends* 32
 - 2.5.2 *Major Employers* 33
 - 2.5.3 *Important New Developments*..... 33
 - 3.5.3.1 *U.S. Naval Supply Corps School*..... 33
 - 3.5.3.2 *Oliver Rubber* 34
 - 2.5.4 *Unique Economic Situations* 34
 - 3.5.4.1 *University of Georgia* 34

2.1 List of Tables

Table 1: Employment By Industry – Clarke County 2002.....	5
Table 2: Total Retail Sales – Clarke County.....	7
Table 3: Total Earnings – Clarke County.....	8
Table 4: Comparison to State and Surrounding Counties	9
Table 5: Georgia Labor Force Estimates – Clarke County, Athens-Clarke County MSA, Georgia and the U.S.....	10
Table 6: Clarke County Employment by Sector	11
Table 7: Clarke County Earnings by Sector.....	12
Table 8: State of Georgia Employment by Sector	13
Table 9: State of Georgia Earnings by Sector	14
Table 10: Comparison to Nation – Clarke County, Georgia, U.S.....	15
Table 11: United States Employment by Sector.....	16
Table 12: United States Earnings by Sector	17
Table 13: Local Area Unemployment Statistics Information.....	18
Table 14: Local Area Unemployment Statistics Line Graph.....	18
Table 15: Employment Occupations - Clarke County	19
Table 16: Per Capita Income and Projections for Clarke County, W&P Wealth Index and Mean Household Income.....	20
Table 17: Clarke County Per Capita Personal Income.....	22
Table 18: Income as Reported in 2000 Census	23
Table 19: Commuting to Work – Clarke County.....	23
Table 20: Commuting Patterns - Employed Residents Of Clarke County	24
Table 21: Communting Patterns - Persons Working In Clarke County	25

2.2 Introduction

The Economic Development Chapter identifies the trends and issues relating to the economic characteristics of Clarke County. The various sectors or industries that constitute Clarke County's economic base are evaluated in terms of their relative importance and impact. Clarke County's economy will be described in context of the State of Georgia's economy as well as on a national level. The characteristics of the labor force, including employment status, occupations, personal income, as well as wages and commuting patterns are described in the following text. Development agencies operating within the county, their programs as well as various tools, education, training and other economic resources available to local businesses and residents are listed and described.

The analysis of economic trends within Clarke County includes a look at which sectors, industries and employers are waning and which are growing. Any unique economic situations are discussed. Major employers and important new developments for their impact on our community are evaluated.

2.2.1 City of Winterville Economic Development

It is important to note that the Census information that is presently available does not include economic data for the City of Winterville as a separate tract, block, or unique jurisdiction. Because of the relatively small size of Winterville, its economy is statistically insignificant in relation to Clarke County. Moreover, the City of Winterville does not possess the staff or the resources to maintain detailed records of the city's economic development data. As a result, many of the sections included in this element are limited in scope regarding Winterville's economy. Unless otherwise noted, any mention of Athens-Clarke County in this element includes information for the City of Winterville.

Economic Base

2.2.2 Employment by Industry

While the Athens-Clarke County economy is heavily dependent upon public sector employment through the University of Georgia and other local government agencies, Athens-Clarke County has a diverse and healthy manufacturing base.

Table 1: Employment By Industry – Clarke County 2002

INDUSTRY	NUMBER OF FIRMS	EMPLOYMENT NUMBER	PERCENT	WKLY WAGE
Goods Producing	335	10,406	16.9	\$676
<i>Agriculture, forestry, & fishing</i>	11	62	0.1	498
<i>Mining</i>	*	*	*	*
<i>Construction</i>	211	1,818	3	565
<i>Manufacturing</i>	111	8,497	13.8	700
Food Manufacturing	9	2,544	4.1	434
Beverage & tobacco mfg	3	85	0.1	855
Textile mills	*	*	*	*
Textile product mills	*	*	*	*
Apparel Manufacturing	*	*	*	*
Leather & allied product mfg	0	0	0	0
Wood product Manufacturing	5	328	0.5	653
Paper Manufacturing	*	*	*	*
Printing and related activities	24	234	0.4	538
Petroleum and coal products mfg	0	0	0	0
Chemical Manufacturing	*	*	*	*
Plastics & rubber products mfg	6	329	0.5	741
Nonmetallic mineral product mfg	*	*	*	*
Primary metal Manufacturing	0	0	0	0
Fabricated metal product mfg	13	377	0.6	671
Machinery Manufacturing	8	729	1.2	937
Computer & electronic product mfg	*	*	*	*
Electrical equipment/appliance	*	*	*	*
Transportation equipment	4	433	0.7	788
Furniture and related product mfg	*	*	*	*
Miscellaneous mfg industries	10	81	0.1	754

INDUSTRY	NUMBER OF FIRMS	EMPLOYEE NUMBER	PERCENT	WKLY WAGE
Service Producing	2,474	33,367	54.3	498
Wholesale trade	95	1,540	2.5	692
Retail trade	526	7,898	12.9	387
Transportation and warehousing	51	922	1.5	594
Utilities	5	195	0.3	1,295
Information	47	957	1.6	601
Finance and insurance	167	1,176	1.9	765
Real estate and rental and leasing	174	708	1.2	458
Professional, scientific/tech svcs	280	1,319	2.1	729
Management: companies/enterprises	16	313	0.5	1,019
Administrative and waste services	129	2,125	3.5	355
Educational services	23	262	0.4	629
Health care and social services	312	7,410	12.1	742
Arts, entertainment and recreation	33	395	0.6	599
Accommodation and food services	271	5,889	9.6	203
Other services (except government)	347	2,258	3.7	331
Unclassified - industry not assigned	37	100	0.2	527
Total - Private Sector	2,845	43,873	71.4	540
Total - Government	98	17,572	28.6	724
Federal government	25	1,595	2.6	983
State government	42*	12,049*	20*	*
Local government	31	3,928	6.4	581
ALL INDUSTRIES	2,943	61,445	100	\$593
ALL INDUSTRIES - GEORGIA				\$687

Notes: *Denotes confidential data relating to individual employers and cannot be released by the Georgia Department of Labor – figure, if stated, is an estimate.

This data uses the North American Industrial Classification System (NAICS) categories (as opposed to Standard Industrial Classification (SIC) categories).

Average weekly wage is derived by dividing gross payroll dollars paid to all employees - both hourly and salaried - by the average number of employees who had earnings; average earnings are then divided by the number of weeks in a pay period to obtain weekly figures. Figures in other columns may not sum accurately due to rounding since all figures represent Annual Averages. Health services include government hospitals. Educational services include state and government institutions.

Source: Georgia Department of Labor. The data represents jobs that are covered by unemployment insurance laws.

Table 2: Total Retail Sales – Clarke County

YEAR:	1970	1980	1990	2000	2001	2003	2004	2005	2010	2015	2020	2025
Total Retail Sales (Mill. 1996 \$)	515.3	733.28	967.26	1321.11	1332.8	1383.47	1409.6	1436.34	1578.33	1735.4	1908.79	2100.16
Building Materials, Hardware .	37.6	46.22	62.24	61.53	63.79	63.53	64.08	64.86	70.36	77.66	85.76	94
General Merchandise	65.1	89.62	136.76	254.43	262.35	279.26	286.82	294.09	327.37	355.89	383.65	412.02
Food Stores	102.5	148.74	157.48	219.22	218.81	222.68	224.79	227.15	241.77	258.77	279.11	303.05
Automobile Dealers	94.22	129.81	189.77	293.01	298.79	311.69	317.6	323.62	356.35	397.14	439.68	482.54
Gasoline Service Stations	42.18	63.68	71.64	63.72	59.98	59.67	59.66	59.79	62.02	65.87	71.35	78.39
Apparel And Accessories	36.27	36.05	58.72	73.63	72.37	74.9	76.28	77.69	85.17	93.57	103.55	115.47
Furniture, Home Furnishings ..	24.13	38.91	39.08	75.95	73.93	73.9	75.3	76.72	84.05	93.25	103.13	113.13
Eating And Drinking Places ...	42.32	76.52	110.07	124.4	126.83	133.99	137.41	140.89	159.22	178.91	201.71	228.61
Drug Stores	17.55	24.48	38.6	43.36	46.01	48.43	49.54	50.64	56.03	61.12	66.5	72.47
Miscellaneous Retail Stores ..	53.44	79.25	102.89	111.88	109.94	115.44	118.12	120.88	135.99	153.23	174.34	200.5
<i>Source: Woods & Poole Economics Inc. Clarke County, Georgia 2003 Data Pamphlet</i>												

Table 3: Total Earnings – Clarke County

YEAR:	1970	1980	1990	2000	2001	2003	2004	2005	2010	2015	2020	2025
Total Earnings (Millions 1996 \$)	755.42	1134.05	1644.67	2126.18	2182.96	2279.72	2327.95	2376.67	2626.24	2885.69	3155.02	3434.23
Farm Earnings	2	1.49	9.18	5.01	5.02	5.24	5.35	5.45	5.97	6.51	7.1	7.74
Agricultural Services, Other .	1.31	1.49	4.3	6.14e	6.54	6.85	7	7.17	8.11	9.12	10.17	11.23
Mining	0.28	3.01	1.42	1.57e	1.79	1.8	1.81	1.82	1.88	1.95	2.03	2.11
Construction	44.5	42.48	67.28	79.98	82.33	83.73	84.59	85.56	90.58	95.34	99.73	103.77
Manufacturing	185.32	278.99	291.53	328.62	335.36	344.01	348.59	353.28	376.43	399.52	422.92	446.9
Transport, Comm. & Public Util	34.83	43.6	52.72	72.74	78.09	86.9	91.14	95.33	115.35	133.77	150.32	164.54
Wholesale Trade	25.57	47.41	107.41	92.34	96.12	102.05	104.74	107.29	118.82	129.35	139.57	149.82
Retail Trade	80.41	105.8	143.54	217.11	221.9	227.62	230.46	233.35	247.96	263.02	278.16	292.92
Finance, Ins. & Real Estate ..	40.01	39.58	53.79	87.54	91.45	98.39	101.94	105.51	123.39	141.31	159.15	176.76
Services	86.65	148.54	296.59	513	530.14	558.93	573.8	589.21	674.69	773.92	887.46	1016.52
Federal Civilian Govt	62.3	99.71	101.32	97.03	91.58	90.3	89.49	88.6	84.86	82	79.88	78.48
Federal Military Govt	17.78	23.86	32.51	31.32	32.41	33.28	33.71	34.15	36.33	38.46	40.51	42.46
State And Local Govt	174.47	298.11	483.08	593.78	610.23	640.6	655.3	669.94	741.86	811.42	878.04	940.99
<i>Source: Woods & Poole Economics Inc. Clarke County, Georgia 2003 Data Pamphlet</i>												

2.2.3 Comparison to State

Clarke County has an unemployment rate less than all but one of the surrounding counties and less than the State of Georgia as a whole; only Oconee County has a lower unemployment rate.

Table 4: Comparison to State and Surrounding Counties

Labor Force: 2003 Annual Averages				
	Labor Force	Employed	Unemployed	Unemployment Rate
Clarke	51,327	49,758	1,569	3.1%
Barrow	25,035	23,754	1,281	5.1%
Jackson	25,176	24,216	960	3.8%
Madison	14,045	13,535	510	3.6%
Oconee	14,554	14,275	279	1.9%
Oglethorpe	6,915	6,646	269	3.9%
Clarke Area	137,052	132,184	4,868	3.6%
Georgia	4,414,014	4,206,823	207,191	4.7%
Note: Labor force includes residents of the county who are employed or seeking employment.				
<i>Source: Georgia Department of Labor; Bureau of Labor Statistics</i>				

More recent figures agree with the 2003 Annual Averages, and demonstrate that Clarke County has a lower unemployment rate than that of Georgia and the United States. The Athens MSA (Metropolitan Statistical Area) and include Clarke, Madison and Oconee Counties.

Table 5: Georgia Labor Force Estimates – Clarke County, Athens-Clarke County MSA, Georgia and the U.S.

Not Seasonally Adjusted - Place of Residence - Persons 16 Years and Older						
Area	Employment Status	Preliminary OCT 2005	Revised: 9/1/2005	Revised: 10/1/2004	Change from: Revised: 9/1/2005	Change From: Revised: 10/1/2004
Clarke County	Civilian labor force	59,299	58,973	57,650	326	1,649
	Employed	56,789	56,247	55,598	542	1,191
	Unemployed	2,510	2,726	2,052	-216	458
	Rate	4.2	4.6	3.6		
Athens-Clarke County MSA	Civilian labor force	98,665	98,021	95,919	644	2,746
	Employed	94,653	93,750	92,667	903	1,986
	Unemployed	4,012	4,271	3,252	-259	760
	Rate	4.1	4.4	3.4		
Georgia	Civilian labor force	4,560,422	4,543,093	4,413,386	17,329	147,036
	Employed	4,316,582	4,291,248	4,210,535	25,334	106,047
	Unemployed	243,840	251,845	202,851	-8,005	40,989
	Rate	5.3	5.5	4.6		
United States	Civilian labor force	150,304,000	149,838,000	147,978,000	466,000	2,326,000
	Employed	6,964,000	142,579,000	140,447,000	761,000	2,893,000
	Unemployed	6,964,000	7,259,000	7,531,000	-295,000	-567,000
	Rate	4.6	4.8	5.1		
Note: Athens-Clarke County MSA: Clarke, Madison, Oconee, and Oglethorpe counties.						
Source: Georgia Department of Labor, Workforce Information & Analysis						

Information gathered from Woods and Poole project that Clarke County's citizens will continue to be employed by State and Local Government, the Service Industries, Retail and Manufacturing with proportional gains in most sectors – the exception being 'Farm Employment'. Neither the Employment by Sector, or the Earnings by Sector statistics factor in the relocation of the Navy School when projecting increases in employment by the 'Federal Military Government'.

Table 6: Clarke County Employment by Sector

	1970	1980	1990	2000	2005	2010	2015	2020	2025
Total Employment (Thousands)	36.10	48.66	62.77	75.85	80.62	85.26	89.85	94.35	98.76
Farm Employment	0.20	0.26	0.26	0.14	0.14	0.14	0.14	0.13	0.13
Agricultural Services, Other	0.10	0.14	0.36	0.50	0.53	0.57	0.62	0.66	0.70
Mining	0.00	0.02	0.07	0.07	0.07	0.07	0.08	0.08	0.08
Construction	1.79	1.77	2.49	3.02	3.09	3.19	3.27	3.35	3.40
Manufacturing	8.68	10.98	10.77	10.32	10.42	10.51	10.59	10.67	10.76
Transport, Comm. & Public Utility	1.33	1.23	1.51	2.05	2.51	2.89	3.21	3.46	3.64
Wholesale Trade	0.96	1.74	3.16	2.76	3.11	3.36	3.58	3.79	3.99
Retail Trade	4.79	7.18	11.53	14.43	15.17	15.77	16.37	16.95	17.47
Finance, Ins. & Real Estate	2.12	2.60	2.63	3.61	4.06	4.46	4.82	5.13	5.41
Services	5.81	8.68	13.48	20.52	21.89	23.50	25.36	27.42	29.69
Federal Civilian Govt	1.63	2.08	1.95	1.57	1.37	1.27	1.18	1.11	1.05
Federal Military Govt	0.76	0.68	0.80	0.69	0.70	0.71	0.72	0.73	0.73
State And Local Govt	7.93	11.29	13.77	16.18	17.58	18.81	19.92	20.88	21.70

Source: Woods & Poole Economics Inc. Clarke County, Georgia 2003 Data Pamphlet

Table 7: Clarke County Earnings by Sector

	1970	1980	1990	2000	2005	2010	2015	2020	2025
Total Earnings (Millions 1996 \$)	\$755.42	\$1,134.05	\$1,644.67	\$2,126.18	\$2,376.67	\$2,626.24	\$2,885.69	\$3,155.02	\$3,434.23
Farm Earnings	\$2.00	\$1.49	\$9.18	\$5.01	\$5.45	\$5.97	\$6.51	\$7.10	\$7.74
Agricultural Services, Other	\$1.31	\$1.49	\$4.30	\$6.15	\$7.17	\$8.11	\$9.12	\$10.17	\$11.23
Mining	\$0.28	\$3.01	\$1.42	\$1.57	\$1.82	\$1.88	\$1.95	\$2.03	\$2.11
Construction	\$44.50	\$42.48	\$67.29	\$79.98	\$85.56	\$90.58	\$95.34	\$99.73	\$103.77
Manufacturing	\$185.32	\$278.99	\$291.53	\$328.62	\$353.28	\$376.43	\$399.52	\$422.92	\$446.90
Transport, Comm. & Public Util	\$34.83	\$43.60	\$52.72	\$72.74	\$95.34	\$115.35	\$133.77	\$150.32	\$164.54
Wholesale Trade	\$25.57	\$47.41	\$107.41	\$92.34	\$107.29	\$118.82	\$129.35	\$139.57	\$149.82
Retail Trade	\$80.41	\$105.80	\$143.54	\$217.11	\$233.35	\$247.96	\$263.02	\$278.16	\$292.92
Finance, Ins. & Real Estate	\$40.01	\$39.58	\$53.79	\$87.54	\$105.51	\$123.39	\$141.32	\$159.15	\$176.76
Services	\$86.65	\$148.54	\$296.59	\$513.00	\$589.21	\$674.69	\$773.93	\$887.46	\$1,016.52
Federal Civilian Govt	\$62.30	\$99.71	\$101.32	\$97.03	\$88.60	\$84.86	\$82.00	\$79.88	\$78.48
Federal Military Govt	\$17.78	\$23.86	\$32.51	\$31.32	\$34.15	\$36.33	\$38.46	\$40.51	\$42.46
State And Local Govt	\$174.47	\$298.11	\$483.08	\$593.78	\$669.94	\$741.86	\$811.42	\$878.04	\$940.99
<i>Source: Woods & Poole Economics Inc. Clarke County, Georgia 2003 Data Pamphlet</i>									

In the year 2005, according to Woods & Poole, the percentage of persons being employed by State and Local Government is 11% higher than the State average. The percentage of those being employed by the Transportation, Communication and Public Utilities Sector, as well as the Services Sector is approximately 3% lower than State figures. The rest of the sectors fall within 2% of State percentages.

Table 8: State of Georgia Employment by Sector

	1970	1980	1990	2000	2005	2010	2015	2020	2025
Total Employment (Thousands)	2,120.77	2,747.31	3,690.61	4,905.75	5,269.71	5,670.53	6,086.26	6,511.94	6,943.90
Farm Employment	94.13	96.56	74.29	67.04	65.71	64.26	63.04	62.01	61.22
Agricultural Services, Other	10.85	16.43	31.49	57.03	63.2	69	74.77	80.36	85.62
Mining	7.45	8.81	10.59	9.55	9.54	9.71	9.92	10.17	10.47
Construction	102.04	139.23	212.34	305.97	328.43	352.91	376.1	397.19	415.47
Manufacturing	475.21	528.81	572.48	600.18	615.24	630.95	644.74	656.21	665.19
Transport, Comm. & Public Utilities	112.13	152.58	216.34	302.46	331.49	361.66	389.3	413.12	432.12
Wholesale Trade	108.66	174.09	228.21	275.12	300.23	323.93	347.81	371.84	395.99
Retail Trade	288.61	407.63	606.61	820.05	870.06	932.92	996.49	1,059.69	1,121.59
Finance, Ins. & Real Estate	135.19	199.89	244.95	348.36	371.14	397.07	422.68	447.47	470.98
Services	368.88	502.84	876.6	1,426.40	1,580.07	1,751.83	1,944.29	2,157.03	2,390.07
Federal Civilian Govt	82.65	84.6	102.98	96.6	93.89	94.23	94.67	95.16	95.68
Federal Military Govt	115.03	92.3	90.75	94.35	95.92	97.61	98.83	99.57	99.82
State And Local Govt	219.94	343.55	422.99	502.65	544.8	584.45	623.62	662.12	699.69

Source: Woods & Poole Economics Inc. Clarke County, Georgia 2003 Data Pamphlet

Table 9: State of Georgia Earnings by Sector

	1970	1980	1990	2000	2005	2010	2015	2020	2025
TOTAL EARNINGS (MILLIONS 1996\$)	\$47,122.56	\$66,537.13	\$102,642.1 6	\$163,909.3 6	\$184,817.4 2	\$208,170.9 8	\$233,619.1 0	\$261,117.2 6	\$290,647.32
Farm Earnings	\$1,516.34	\$106.15	\$1,391.28	\$1,781.23	\$1,881.45	\$2,055.36	\$2,249.39	\$2,467.05	\$2,712.54
Agricultural Services, Other	\$202.12	\$244.86	\$475.91	\$960.77	\$1,110.05	\$1,271.78	\$1,443.96	\$1,622.70	\$1,804.11
Mining	\$211.78	\$429.96	\$373.74	\$398.79	\$440.13	\$449.72	\$463.34	\$479.80	\$498.66
Construction	\$2,664.44	\$3,765.49	\$5,975.28	\$9,769.87	\$10,841.81	\$12,000.53	\$13,163.26	\$14,295.63	\$15,365.73
Manufacturing	\$11,480.41	\$14,997.79	\$17,973.68	\$23,532.77	\$25,743.14	\$28,026.36	\$30,299.03	\$32,521.52	\$34,657.36
Transport, Comm. & Public Util	\$3,604.92	\$6,208.75	\$8,981.35	\$16,804.35	\$19,235.78	\$21,901.62	\$24,580.51	\$27,171.99	\$29,577.51
Wholesale Trade	\$3,504.37	\$5,900.69	\$9,090.71	\$14,011.72	\$15,704.95	\$17,371.34	\$19,112.93	\$20,931.65	\$22,828.42
Retail Trade	\$5,186.19	\$6,870.37	\$9,413.85	\$14,480.20	\$15,748.55	\$17,295.37	\$18,916.19	\$20,591.05	\$22,300.35
Finance, Ins. & Real Estate	\$2,414.16	\$3,617.31	\$6,600.85	\$12,471.45	\$14,168.47	\$16,110.68	\$18,192.38	\$20,394.65	\$22,694.96
Services	\$6,248.03	\$10,401.94	\$22,532.22	\$44,364.25	\$52,336.26	\$61,637.63	\$72,610.23	\$85,432.55	\$100,306.84
Federal Civilian Govt	\$2,941.53	\$3,751.39	\$4,780.64	\$5,651.21	\$5,729.53	\$5,968.75	\$6,224.23	\$6,492.82	\$6,774.99
Federal Military Govt	\$2,454.75	\$2,475.23	\$2,765.14	\$3,408.73	\$3,627.64	\$3,861.38	\$4,090.02	\$4,310.95	\$4,521.49
State And Local Govt	\$4,693.51	\$7,767.21	\$12,287.51	\$16,274.02	\$18,249.67	\$20,220.45	\$22,273.62	\$24,404.90	\$26,604.38
<i>Source: Woods & Poole Economics Inc. Clarke County, Georgia 2003 Data Pamphlet</i>									

2.2.4 Comparison to Nation

Clarke County's Unemployment rates are approximately 2.9% lower than those for the United States and 1.6% lower than Georgia's averages.

Table 10: Comparison to Nation – Clarke County, Georgia, U.S.

Labor Force: 2003 Annual Averages				
	Labor Force	Employed	Unemployed	Unemployment Rate
Clarke	51,327	49,758	1,569	3.1%
Georgia	4,414,014	4,206,823	207,191	4.7%
United States	146,510,000	137,736,000	8,774,000	6%
Note: Labor force includes residents of the county who are employed or seeking employment.				
<i>Source: Georgia Department of Labor; Bureau of Labor Statistics</i>				

As with the comparison with State figures, the percentage of persons employed by State or Local Government in Clarke County is 11% higher than the percentage of the same in the United States. Nationally, 33% of the labor force is employed in the service industry, in Clarke County that figure is closer to 27%, a difference of 6%. A slightly higher percent of those in Clarke County work in the 'Retail' sector and a slightly lower percent work in the 'Services' sector. Other than those areas, employment in Clarke County, on average, is distributed across the sectors in a manner similar to that found throughout the United States.

Table 11: United States Employment by Sector

	1970	1980	1990	2000	2005	2010	2015	2020	2025
Total Employment (Thousands)	91,281.59	114,231.19	139,426.90	167,465.31	178,141.49	189,453.08	201,383.28	213,959.13	227,212.23
Farm Employment	3,961.00	3,798.00	3,153.00	3,103.00	3,098.33	3,074.00	3,047.99	3,020.28	2,990.92
Agricultural Services, Other	525.29	908.99	1,452.96	2,166.82	2,335.35	2,485.62	2,642.30	2,805.39	2,974.83
Mining	743.91	1,277.60	1,044.09	795.40	830.67	866.59	903.15	940.27	977.92
Construction	4,398.77	5,654.20	7,260.79	9,604.29	10,253.04	10,909.27	11,548.86	12,164.12	12,747.30
Manufacturing	19,687.40	20,781.10	19,697.20	19,106.92	19,243.70	19,419.97	19,606.95	19,804.84	20,013.98
Transport, Comm. & Public Util	4,865.51	5,672.11	6,568.61	8,247.10	8,727.08	9,223.25	9,709.08	10,180.11	10,631.76
Wholesale Trade	4,172.70	5,741.69	6,711.50	7,584.93	8,162.97	8,692.10	9,228.12	9,768.14	10,309.19
Retail Trade	13,698.80	17,883.90	22,920.51	27,344.10	28,751.94	30,375.02	32,045.70	33,761.87	35,521.15
Finance, Ins. & Real Estate	6,125.40	8,756.01	10,712.60	13,495.02	14,296.78	15,163.06	16,040.15	16,923.94	17,810.19
Services	17,029.81	24,999.60	38,709.65	53,276.74	58,499.47	64,046.95	70,111.91	76,741.79	83,988.31
Federal Civilian Govt	2,902.01	2,993.99	3,233.00	2,890.99	2,849.61	2,880.04	2,910.46	2,940.85	2,971.27
Federal Military Govt	3,231.99	2,501.01	2,718.00	2,075.02	2,109.68	2,146.66	2,173.55	2,189.79	2,195.29
State And Local Govt	9,939.00	13,263.00	15,245.00	17,775.00	18,982.88	20,170.54	21,415.06	22,717.76	24,080.12
<i>Source: Woods & Poole Economics Inc. Clarke County, Georgia 2003 Data Pamphlet</i>									

Table 12: United States Earnings by Sector

	1970	1980	1990	2000	2005	2010	2015	2020	2025
TOTAL EARNINGS (BILLIONS 1996\$)	\$2,380.11	\$3,133.27	\$4,097.14	\$5,663.10	\$6,306.58	\$7,008.74	\$7,783.14	\$8,637.04	\$9,578.51
Farm Earnings	\$66.51	\$38.59	\$51.25	\$46.42	\$51.39	\$56.42	\$61.81	\$67.59	\$73.76
Agricultural Services, Other	\$10.59	\$13.88	\$25.89	\$37.97	\$42.77	\$47.53	\$52.70	\$58.29	\$64.33
Mining	\$24.98	\$65.93	\$42.58	\$48.04	\$50.93	\$53.92	\$57.02	\$60.22	\$63.51
Construction	\$152.43	\$193.52	\$241.73	\$338.47	\$371.97	\$406.44	\$441.72	\$477.48	\$513.35
Manufacturing	\$625.16	\$758.59	\$777.10	\$892.47	\$950.85	\$1,011.50	\$1,074.01	\$1,138.26	\$1,204.11
Transport, Comm. & Public Util	\$169.92	\$232.76	\$266.31	\$385.21	\$424.36	\$466.06	\$509.67	\$554.98	\$601.71
Wholesale Trade	\$141.10	\$205.96	\$258.22	\$351.18	\$387.68	\$422.77	\$459.63	\$498.18	\$538.32
Retail Trade	\$257.22	\$306.45	\$375.49	\$492.88	\$531.76	\$575.51	\$621.95	\$671.18	\$723.25
Finance, Ins. & Real Estate	\$124.43	\$182.81	\$284.93	\$537.13	\$607.28	\$684.96	\$769.96	\$862.58	\$963.08
Services	\$372.85	\$573.75	\$1,038.03	\$1,653.34	\$1,932.67	\$2,247.49	\$2,611.24	\$3,031.13	\$3,515.37
Federal Civilian Govt	\$109.78	\$140.12	\$160.02	\$176.89	\$181.56	\$190.43	\$199.69	\$209.34	\$219.42
Federal Military Govt	\$62.18	\$61.48	\$79.66	\$69.86	\$74.37	\$79.14	\$83.79	\$88.29	\$92.57
State And Local Govt	\$262.96	\$359.43	\$495.94	\$633.27	\$699.00	\$766.58	\$839.94	\$919.52	\$1,005.73
<i>Source: Woods & Poole Economics Inc. Clarke County, Georgia 2003 Data Pamphlet</i>									

2.3 Labor Force

As is demonstrated by Table 13: Local Area Unemployment Statistics Information and by Table 14: Local Area Unemployment Statistics Line Graph, Unemployment in Clarke County remains lower than in the State of Georgia or the United States.

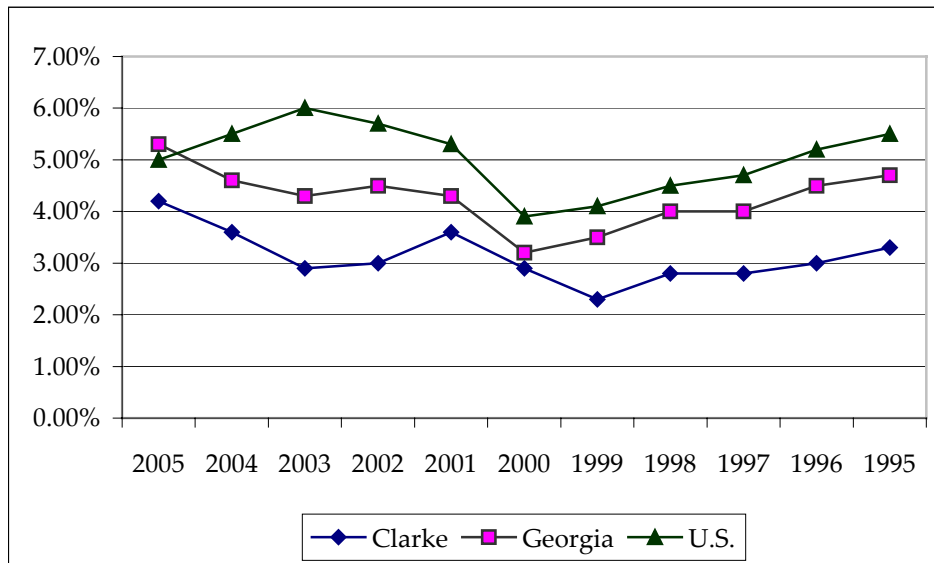
However, Clarke County unemployment rates do shadow, to some extent those of the state and nation.

Table 13: Local Area Unemployment Statistics Information

Clarke County										
2005	2004	2003	2002	2001	2000	1999	1998	1997	1996	1995
4.2%	3.6%	2.9%	3%	3.6%	2.9%	2.3%	2.8%	2.8%	3%	3.3%
State of Georgia										
2005	2004	2003	2002	2001	2000	1999	1998	1997	1996	1995
5.3%	4.6%	4.3%	4.5%	4.3%	3.2%	3.5%	4%	4%	4.5%	4.7%
United States										
2005	2004	2003	2002	2001	2000	1999	1998	1997	1996	1995
5%	5.5%	6%	5.7%	5.3%	3.9%	4.1%	4.5%	4.7%	5.2%	5.5%

Source: U.S. Bureau of Labor Statistics / Suite 4675 / 2 Massachusetts Avenue, NE / Washington, DC 20212-0001

Table 14: Local Area Unemployment Statistics Line Graph



2.3.1 Occupations

Table 15: Employment Occupations - Clarke County

	NUMBER	PERCENT
<i>Employed persons, 16 years and older</i>	49,159	100.00%
Agriculture, forestry, fishing and hunting, and mining	521	1.10%
Construction	2,132	4.30%
Manufacturing	5,823	11.80%
Wholesale trade	1,247	2.50%
Retail trade	6,141	12.50%
Transportation and warehousing, and utilities	1,161	2.40%
Information	1,429	2.90%
Finance, insurance, real estate and rental and leasing	1,844	3.80%
Professional, scientific, management, administrative, and waste management services	3,891	7.90%
Educational, health and social services	15,125	30.80%
Arts, entertainment, recreation, accommodation and food services	6,103	12.40%
Other services (except public administration)	1,941	3.90%
Public administration	1,801	3.70%
Note: NAICS categories are used to identify employment. The data represents employment by place of residence.		
<i>Source: US Census Bureau - 2000 Decennial Census</i>		

3.3.1.1 Per Capita Income

Per Capita Income is equal to the sum of all income sources divided by the total number of persons in a geographic area. Per Capita Income estimates are a useful measure of an average person's economic status. Per Capita Income is estimated by dividing total personal income from all sources by total population. In the long run, per capita income levels of a region are affected by both changing demographic composition and changing local economic conditions. For example, if workers in two counties have similar earnings, but one county has a higher proportion of children (and therefore a lower proportion of workers) that county will likely also have a lower per capita income.

Personal income can be divided into three major components or sources:

1. *Earnings from work* — wage and salary payments to employees; the income of sole proprietors and partnerships (i.e., consultants and business owners); and other labor income including employer contributions to private pension and private welfare funds such as group health and life insurance, and worker’s compensation.
2. *Investment income* — income attributable to the rental of real property and the imputed net rental income of owner-occupants of non-farm dwellings; interest income from all sources; and all dividend income paid by businesses.
3. *Transfer payments* — payments to individuals for which they do not render current services, such as federal old-age, survivors, and disability benefits (Social Security); supplementary medical insurance; Medic-aid; state unemployment insurance; workers’ compensation; and food stamps.

Table 17: Clarke County Per Capita Personal Income. These figures for Clarke County are as reported by the consulting firm of Woods and Poole Economics in 2003. In 2003, Clarke County had a per capita personal income (PCPI) of \$23,125. This PCPI ranked 62nd in the state and was 80 percent of the state average (\$29,000) and 73 percent of the national average, \$31,472. The 2003 PCPI reflected an increase of 1.6% from 2002. The 2002-2003 state change was 1.1 percent and the national change was 2.2 percent. In 1993 the PCPI of Clarke was \$16,800 and ranked 39th in the state. The 1993-2003 average annual growth rate of PCPI was 3.2 percent. The average annual growth rate for the state was 3.9 percent and for the nation was 4.0 percent.

Table 16: Per Capita Income and Projections for Clarke County, W&P Wealth Index and Mean Household Income

	1970	1980	1990	2000	2005	2010	2015	2020	2025	2030*
Income Per Capita (2003 \$)	\$3,122	\$7,721	\$15,776	\$23,369	\$27,139	\$32,676	\$39,925	\$48,837	\$59,657	\$63,979
W&P Wealth Index (U.S. = 100)	83.64	81.26	86.18	87.15	87.13	86.65	85.99	85.18	84.29	83.984
Mean Household Income (2003 \$)	\$9,223	\$19,703	\$38,497	\$55,888	\$63,820	\$75,880	\$92,165	\$113,008	\$139,239	\$148,060

Source – 1970 – 2025 data: Woods & Poole Economics Inc. Clarke County, Georgia 2003 Data Pamphlet
2030 is a linear projection of Woods and Poole data

Personal Income in the *Woods & Poole* Data for Clarke County are historical for the years 1969 – 2000 and are projected for the years 2001 – 2025. Total Personal Income is income received by persons from all sources, that is from participation in production, from both government and business transfer payments, and from government interest, which is treated like a transfer payment. Persons consist of individuals, nonprofit institutions serving individuals, private uninsured welfare funds and private trust funds. Personal Income is the sum of wages and salaries, other labor income, proprietor's income, rental income of persons, dividend income, personal interest income and transfer payments less personal contributions for social insurance.

W&P Wealth Index

The W&P Wealth Index measures a populace's affluence relative to the national average (US=100.0). This index refers to the wealth of Clarke County, compared to the nation, which is registered at 100.0. The Woods & Poole wealth index recognizes a 100.0 level for the nation as an equal percentage; higher levels indicate a wealthy and stable level while lower levels indicate slightly lower wealth levels in a particular area.

In 2005 the Woods and Poole wealth index for Clarke County indicated 86.18%, in 1990, 87.15% in 2000, and 87.13% in 2005. This reflects overall stability in wages in the local market relative to the national level.

Another source shows Personal Income being slightly lower in Clarke County. Personal income statistics are compiled by the U.S. Department of Commerce, Bureau of Economic Analysis (BEA) using data from all income sources, and are published periodically in the BEA's publication Summary of Current Business.

Note that in both Woods & Poole and the BEA statistics, personal income differs from money income reported by the U.S. Census because personal income includes employee fringe benefits, in-kind assistance payments, and an inventory adjustment to proprietors' income. Personal income also excludes employee contributions to social security.

Table 17: Clarke County Per Capita Personal Income

Year:	1993	1994	1995	1996	1997	1998	1999	2000	2001	2002	2003
Georgia	19,719	20,711	21,677	22,945	23,795	25,279	26,359	27,989	28,675	28,689	29,000
Clarke County	16,800	16,973	17,937	18,762	19,123	20,202	20,612	21,253	22,077	22,752	23,125
% by which Clarke County Per Capita Personal Income is less than Georgia Per Capita Personal Income	14.80%	18.05%	17.25%	18.23%	19.63%	20.08%	21.80%	24.07%	23.01%	20.69%	20.26%
<i>Source: Bureau of Economic Analysis</i>											
Per capita personal income was computed using Census Bureau midyear population estimates.											

The Bureau of Economic Analysis also tracks Total Personal Income (TPI). The Bureau defines Total Personal Income as the following:

Total personal income includes net earnings by place of residence; dividends, interest, and rent; and personal current transfer receipts received by the residents of Clarke. In 2003 net earnings accounted for 63.9 percent of TPI (compared with 65.5 in 1993); dividends, interest, and rent were 21.7 percent (compared with 21.5 in 1993); and personal current transfer receipts were 14.4 percent (compared with 13.0 in 1993). From 2002 to 2003 net earnings increased 5.1 percent; dividends, interest, and rent decreased 2.0 percent; and personal current transfer receipts decreased 1.2 percent. From 1993 to 2003 net earnings increased on average 4.2 percent each year; dividends, interest, and rent increased on average 4.5 percent; and personal current transfer receipts increased on average 5.5 percent.

Whereas Census numbers present the following:

Table 18: Income as Reported in 2000 Census

	Males Median income (dollars)	Females Median income (dollars)	Household Median income (dollars)	Per Capita Income	Families Median income (dollars)	Non-families Households Median income (dollars)
Nation	\$27,932	\$16,327	\$56,604	\$21,587	\$50,046	\$25,705
Georgia	\$27,727	\$16,853	\$56,625	\$21,154	\$49,280	\$26,509
Clarke Co	\$16,322	\$10,944	\$39,884	\$17,123	\$41,607	\$17,310
Clarke Co. as a % of Nation	58.4%	67.0%	70.5%	79.3%	83.1%	67.3%
Clarke Co. as % of State	58.87%	64.94%	70.44%	80.94%	84.43%	65.30%

*1999 Income
Source: US Census Bureau - 2000 Decennial Census*

U.S. Census numbers do not include employee fringe benefits, in-kind assistance payments, and an inventory adjustment to proprietors' income in their definition of personal income and also relies on the amount reported on the Census form itself.

Table 19: Commuting to Work – Clarke County

	Clarke		Georgia		United States	
Workers 16 years and over	48,241	100.0%	3,832,803	100.0%	128,279,228	100.0%
Car, truck, or van -- drove alone	36,243	75.1%	2,968,910	77.5%	97,102,050	75.7%
Car, truck, or van -- carpooled	6,945	14.4%	557,062	14.5%	15,634,051	12.2%
Public transportation (including taxicab)	1,144	2.4%	90,030	2.3%	6,067,703	4.7%
Walked	2,069	4.3%	65,776	1.7%	3,758,982	2.9%
Other means	749	1.6%	42,039	1.1%	1,532,219	1.2%
Worked at home	1,091	2.3%	108,986	2.8%	4,184,223	3.3%
Mean travel time to work (minutes)	18.6		27.7		25.5	

Source: U.S. Census Bureau

Almost 20% of Clarke County residents work outside of the County (approximately 9,232).

Table 20: Commuting Patterns - Employed Residents Of Clarke County

COUNTY WHERE EMPLOYED	NUMBER	PERCENT OF TOTAL
Clarke Co. GA	39,009	80.9%
Oconee Co. GA	1,975	4.1%
Jackson Co. GA	952	2.0%
Gwinnett Co. GA	932	1.9%
Fulton Co. GA	803	1.7%
Hall Co. GA	703	1.5%
Barrow Co. GA	660	1.4%
Madison Co. GA	524	1.1%
Other	2,683	5.6%
Workers 16 and over residing in Clarke County:	48,241	100%

Significantly, 61% of jobs in Clarke County are held by persons who reside in other Counties. That is 27,252 of the 66,160 persons employed in Clarke County live in Oconee, Madison, Oglethorpe, Barrow or some other jurisdiction.

While being an employment ‘hub’ is, in general terms viewed as an enviable position, Clarke County’s good fortune in this matter is diluted by the fact that the largest employer sector, local and state government, does not, in fact support community services as a tax payer.

Table 21: Commuting Patterns - Persons Working In Clarke County

COUNTY OF RESIDENCE	NUMBER	PERCENT OF TOTAL
Clarke Co. GA	39,009	59%
Oconee Co. GA	6,696	10.1%
Madison Co. GA	6,048	9.1%
Oglethorpe Co. GA	3,358	5.1%
Jackson Co. GA	3,022	4.6%
Barrow Co. GA	1,580	2.4%
Gwinnett Co. GA	895	1.4%
Walton Co. GA	895	1.4%
Other	4,657	7%
Total Persons Working in Clarke County:	66,160	100

According to the Bureau of Economic Analysis, “the earnings of persons employed in Clarke [not necessarily living in Clarke County] increased from \$2,627,257 in 2002 to \$2,761,376 in 2003, an increase of 5.1 percent. The 2002-2003 state change was 3.9 percent and the national change was 4.1 percent. The average annual growth rate from the 1993 estimate of \$1,661,501 to the 2003 estimate was 5.2 percent. The average annual growth rate for the state was 6.4 percent and for the nation was 5.3 percent.”

The City of Winterville’s employment growth and economic development efforts are relatively modest and largely dependent upon the economic activity of Athens-Clarke County. However, Winterville does support a number of small, family-owned businesses that offer convenience retail and basic services. Still, the community relies heavily on Athens-Clarke County for retail, professional services, restaurants and entertainment venues.

2.4 Economic Resources

2.4.1 Economic Development Agencies

Clarke County has several state and local agencies that provide economic development services in the community. Each of these agencies has enjoyed limited success in guiding and attracting economic development into the community. Perhaps the greatest achievement shared by all of these agencies is seen in the successful retention and steady expansion of the community’s employment base, particularly in the Retail, Government, and Manufacturing sectors.

Athens-Clarke County Unified Government

The Unified Government assists in economic development efforts through a variety of methods. The Human and Economic Development Department (HED) provides targeted resources for low to moderate neighborhoods. Furthermore, HED provides operating resources to other third party organizations that perform economic development such as the East Athens Development Corporation. The Unified Government assists with other economic development efforts and industrial recruitment with other local and state partners such as the Chamber of Commerce.

Northeast Georgia Regional Development Center (RDC)

The Economic Development Division assists local governments and development organizations through grant-writing and administration, strategic planning, and other technical assistance.

Athens Area Chamber of Commerce

Works to foster economic development and promote local business. Website offers member information, a business directory, economic development information, and resources for visitors and residents of Athens. The Chamber acts as the primary marketing liaison for business expansions and recruitment in the community. The Chamber also has a professional staff that assists local and state agencies in the overall economic development process. Among the focus areas for the Chamber are the recruitment of industries to the Athena Industrial Park and Coggins Industrial Park.

Athens Clarke County Economic Development Foundation

A public-private agency created to work with chamber of commerce, government, and UGA officials in promoting existing industries and attracting new businesses.

Athens Downtown Development Authority

The Athens Downtown Development Authority acts as a liaison between government and the downtown business community to promote and enhance a safe and economically viable central business district. The Athens Downtown Development Authority (ADDA) is primarily responsible for the overall economic development of downtown Athens. The ADDA has a special tax district, composed of the traditional downtown area, where 1 mil is assessed to support economic development efforts. The Authority works to recruit prospective businesses with personal contacts, mail, telephone, trade associations, retain businesses by personal contact, identifying market opportunities, assisting with expansion/relocation or sale of businesses, market available space by providing building/store/office layouts, utility information, and

location advantages. In addition the ADDA assists property owners and managers in evaluating prospective tenants and may negotiate or assist in negotiation of lease terms, parcel assembly and negotiations. The ADDA also promotes the music industry with annual band showcase, yearly promotion of CD's, and national music trade show booths.

Convention and Visitors Bureau

-The Convention and Visitors Bureau coordinates the recruitment and coordination of the convention business and tourism

East Athens Development Corporation

A nonprofit community based development organization working to facilitate the economic empowerment of East Athens residents, and development and revitalization of the East Athens Community.

ACC Department of Human & Economic Development

Addresses the challenges facing low-income citizens and neighborhoods, including poor housing conditions, unemployment, crime & juvenile delinquency. Encourages job creation, new business start-up, and expansion of established businesses.

Georgia Power

Georgia Power, the recipient of the 2001 IDRC Global Innovator Award for Economic Development, operates a full-service Community and Economic Development organization serving the entire state of Georgia. Their success in helping new and existing companies expand in Georgia is a result of experienced leadership, leading edge technology, targeted research and data management tools, and unique value added site selection services. At the same time, Georgia Power assists Georgia communities with building their economic development attractiveness by offering leadership, strategy, infrastructure, and marketing consultation services.

Small Business Development Center - Athens Office

Headquartered at the University of Georgia, the Small Business Development Center (SBDC) Network serves the entire state of Georgia. This organization maintains a local, Athens office which offers business consulting, business training workshops, and marketing and research services to assist individuals with the start-up of new businesses or the expansion of existing businesses.

University of Georgia: Terry College of Business Selig Center for Economic Growth

Produces a wide variety of statistical and economic data. Publishes biennial *Georgia Statistical Abstract*, which includes tables covering population, health, education,

employment, earnings, income, prices, climate, agriculture, manufacturing, transportation, utilities, banking and finance, construction, government, law enforcement, and public welfare. Also publishes *Annual Georgia Economic Outlook* and bimonthly *Georgia Business and Economic Conditions*.

Athens Area Home Builders Association

The Athens Area Home Builders Association, chartered in 1957, is a not-for-profit trade association representing and uniting the building industry in Clarke, Oconee, Madison, and Oglethorpe counties. This organization works to create and promote a favorable climate for quality, affordable construction to assure a positive economic future for communities in the Athens area.

Athens Society for Human Resource Management

A non-profit society of human resource professionals representing business, government, and education.

City of Winterville

The City of Winterville relies heavily on the elected officials of the city to coordinate and pursue local economic development activities. The activities of the City's appointed Planning Commission also have an impact on attracting new business to Winterville and retaining existing businesses. It is also important to note that the last five agencies listed above (Northeast Georgia Regional Development Center, Georgia Department of Industry, Trade and Tourism, UGA Small Business Development Center, Georgia Institute of Technology, and Georgia Power Company) are also available to assist the City of Winterville in their economic development efforts.

2.4.2 Economic Development Programs and Tools

In 1999 Market Street Services, Inc. prepared a document outlining the community economic development strategy for the Athens-Clarke county Economic Development Authority, The Unified Government of Athens-Clarke County and the Athens Area Chamber of Commerce. This study, in two parts, consisted of *Athens-Clarke County Economic Development Plan: A Strategy For A Strong Economy* and *Athens-Clarke County Economic and Demographic Analysis*. Within the *Strategy For A Strong Government*, the following was proposed:

This profile identifies target business clusters that represent strong economic development opportunities for Athens-Clarke County. The six recommended target business clusters are Biotechnology, Environmental Technologies, Value-

Added Manufacturing, Software Development & New Media, Health Care, and Tourism & Hospitality.¹

A copy of these reports is included in the Supplemental Documents for the Community Assessment.

Athens Downtown Development Authority

The Support of Downtown Economic Development Through the Downtown Athens Special Tax District - The Athens-Downtown Development Authority (ADDA) has a special tax district to support economic development. ADDA receives 1 mil to support economic development activities.

East Athens Development Corporation

EADC is a HUD Certified Housing Counseling Agency and a Community Housing Development Organization (CHDO). Housing programs include: Home Buyers Club, housing counseling, housing rehabilitation, owner occupied rehab, down payment assistance, ADA accessibility, and new construction.

The Northeast Georgia Regional Development Center State and Federal Funding Programs for Economic Development

The Economic Development Department offers technical assistance in application-writing and administration of grants and loans to finance economic planning, industrial development, and the public infrastructure necessary for economic development. Following is detailed information about various state and federal funding programs that are available.

Freeport Exemption

Using Tax Strategies to Encourage the Location of Manufacturers in the Community through the Freeport Exemption - Athens-Clarke County voters have elected to exempt the total value of the following types of commercial and industrial inventory: 1) Raw materials and goods in process of manufacture 2) Finished goods produced in Georgia within the last 12 months 3) Finished goods stored in Georgia within the last 12 months and destined for shipment out-of-state. This program is available to Athens-Clarke County and the City of Winterville.

¹ Market Street Services, Inc. *Athens-Clarke County Economic Development Plan: A Strategy For A Strong Economy*. April 7, 1999 p.1.

Hospitality Resource Panel Athens Downtown Development Authority

Formed in 1999, the Athens HRP is a community-organizing framework for creating an alliance of business associations, government agencies, and community organizations dedicated to developing safe communities and healthy businesses through the promotion of responsible hospitality principles and practices. As its name implies, an HRP is a "resource" to the hospitality industry, as well as everyone else involved. Rather than creating new programs, new projects or new materials, the HRP works to enhance the availability of programs and participation in those programs that currently exist. Through regular communication and collaboration, key stakeholders identify and develop strategies to address issues and concerns of the community relating to the service of food, alcoholic beverages and entertainment.

Minority Business Development

In 2004 the Athens Area Chamber of Commerce Board of Directors: commissioned the Minority Business Action Team (now a full standing Committee). The commitment adopted by the Athens Area Chamber of Commerce Board of Directors reads as follows: "to employ its best efforts to ensure the meaningful participation by area minority (African-American, Hispanic, Latino, etc) businesses (or their representatives) in the governance, programs, operations, and business of the Chamber as the creation of opportunities for these minority businesses to do business with other businesses, governments, and institutions in the Athens area."

The Provision of Industrial Sites through Industrial Park Development - The Athens Chamber of Commerce markets industrial sites in the community. The primary industrial parks for the community are the Athena Industrial Park, Coggins Industrial Park and Paradise Valley Industrial Park. A significant industrial site is also located off of US 78 bus. and Atlanta Highway (known as the IBM property).

2.4.3 Education Training

Athens-Clarke County has access to some of the best education and job training resources in the country. Home to the University of Georgia and Athens Area Technical College, Athens-Clarke County has a broad array of educational opportunities available to support economic development throughout Athens-Clarke County and the City of Winterville.

The University of Georgia

The University of Georgia is accredited by the Commission on Colleges of the Southern Association of Colleges and Schools to award associate, bachelor's, master's and doctoral degrees. In addition a number of the individual university departments, degree programs, and service functions are accredited by appropriate professional organizations. The University has approximately 33,600 students enrolled at the Athens-Clarke County campus.

Athens Technical College

Athens Technical College has an enrollment of roughly 20,000 students, the majority of which are in adult education and continuing education credit programs. Athens Technical College also offers a new veterinary technician certification program and a biotechnology degree that focuses on laboratory technical skills as well as skills more specific to the biotechnology industry.

Clarke County School System

The Clarke County school system provides residents with college preparatory and vocational programs.

Georgia's Quick Start

Georgia's Quick Start is a nationally-recognized program that provides high quality training services at no cost to new or expanding businesses in Georgia. The state of Georgia provides many workforce training and assistance programs at little or no charge to help businesses develop their employees' skills. Quick Start is administered through the Georgia Department of Technical & Adult Education (DTAE). Quick Start training services include: Assessments, Company Orientation, Technical and Advanced Manufacturing Technology Training, Productivity Enhancement, Leadership and Human Resources Development, Employee Involvement Training, Instructor Training, Office Automation/Administrative Training, and Customer Service Skills. Quick Start training for companies locating in Clarke County is available through Athens Technical College.

The Georgia Department of Labor Athens Career Center

The Georgia Department of Labor operates the Athens Career Center, a Comprehensive One-Stop Career Center. The Center offers career and job information, internet job search, computer resume service, employment counseling, federal bonding program, interpreter/reader, job placement, job search workshops, resource area, skills assessment, unemployment insurance, work experience, work site training at this

center. This center serves Barrow, Clarke, Greene, Jackson, Madison, Morgan, Oconee and Oglethorpe counties.

Athens Area Chamber of Commerce: Mentor Program

Initiated in 1991, the program is a dynamic partnership between the Athens Area Chamber of Commerce and the Clarke County School District. It pairs trained community volunteers with area school children and is designed to reach students who show potential but may need a little extra attention and guidance. There are now approximately 800 mentors.

Other agencies, including the Unified Government, provide resources for job training. HED provides resources to agencies such as Catholic Social Services to address employment and education problems faced by Hispanics and other immigrants in the community. Programs offered include English as a Second Language instruction, employment counseling and job placement.

2.5 Economic Trends

2.5.1 Sector Trends

According to a report by the University of Georgia's Selig Center for Economic Growth, Athens-Clarke County's Economic Character can be summed up as follows:

"This MSA has the largest share of government jobs in the state. Since a large proportion of spending and employment is tied to government appropriations, the local economy is very recession resilient. One negative implication, however, is that government spending tends to lag the overall macroeconomic cycle during recoveries."²

² Jeffrey M. Humphreys and P. George Benson, "Georgia's Economic Outlook for 2006," *Georgia Business and Economic Conditions Volume 65, Number 4 Fourth Quarter* " Terry College of Business ,The University of Georgia (2005): p. 6

2.5.2 Major Employers

The Five Largest Employers in Clarke County³ are:

Athens Regional Medical Center
Con Agra Poultry, Inc.
Gold Kist Inc
Saint Mary's Hospital
University of Georgia

While the government sector clearly dominates Clarke County's economy, the economic base rests surely on three sectors:

1. Government (University of Georgia, Athens-Clarke County Unified Government, Clarke County School District)
2. Medical Services
3. Manufacturing

2.5.3 Important New Developments

3.5.3.1 U.S. Naval Supply Corps School

The U.S. Naval Supply Corps School closing is scheduled for 2010, when its functions will move to a base in Rhode Island. The closure "...will cost about 1,000 jobs or 1.3 percent of the MSA's current employment. The closure diminishes the prospects for growth over the next few years, but the School's campus has excellent potential for redevelopment."⁴ The Navy School Local Redevelopment Authority, a 16-member board that's developing a plan for the 58-acre property, will guide the redevelopment of the property.

³ Figures represent employment covered by unemployment insurance excluding all government agencies (except correctional institutions, state hospitals, colleges and universities), public schools, railroads and the US Postal Service. Data source is the Georgia Department of Labor and is shown for Third Quarter 2003. Employers are listed alphabetically by county, not by number of employees.

⁴ Jeffrey M. Humphreys and P. George Benson, "Georgia's Economic Outlook for 2006," *Georgia Business and Economic Conditions Volume 65, Number 4 Fourth Quarter* " Terry College of Business ,The University of Georgia (2005): p. 66

3.5.3.2 Oliver Rubber

Cooper Tire & Rubber Co. of Findlay, Ohio, the parent company of Oliver Rubber, on May 8, 2006 filed official documents stating the firm's intention to shut down its Athens plant. 140 persons will lose jobs as a result of the closure at Oliver Rubber as well as leave the facility vacant.

2.5.4 Unique Economic Situations

3.5.4.1 University of Georgia

“In the simplest and broadest terms, the total economic impact of university-related spending in FY 1998 on the Athens MSA is estimated at \$966 million. Of this total, \$671 million (69 percent) is the direct impact of spending and \$295 million (31 percent) is the induced or re-spending (multiplier) impact.”⁵

“Employment generated directly or indirectly by UGA-related spending accounts for more than 22 percent of all the jobs held by local residents.”⁶

⁵ Jeffrey M. Humphreys, David G. Clements, JoAnne Lowe, Tracie W. Sapp, “Economic Impact of The University of Georgia on the Athens Area” *Georgia Business and Economic Conditions Volume 59, Number 3*, Terry College of Business, The University of Georgia (May-June 1999): p. 2

⁶ Jeffrey M. Humphreys, David G. Clements, JoAnne Lowe, Tracie W. Sapp, “Economic Impact of The University of Georgia on the Athens Area” *Georgia Business and Economic Conditions Volume 59, Number 3*, Terry College of Business, The University of Georgia (May-June 1999): p. 2