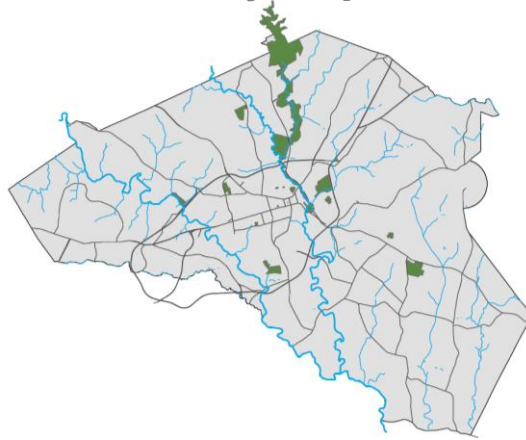


Project 40

Park Facility Improvements



ATHENS-CLARKE COUNTY
LEISURE SERVICES DEPARTMENT

Project 40- Park Facility Improvements |

Park Facilities

- Leisure Services Department
 - 28 Parks, including:

4 community centers	17 playgrounds
6 aquatic facilities	19 baseball/softball fields
2 captive animal locations	21 soccer & Multi-purpose fields
4 art & performance venues	53 surfaced courts
 - 2,532 Acres
 - 43 Miles of Trail (10 more within 2 years)
 - Over 57 Acres of Pavement
 - 8,701 Feet of Bridges & Boardwalks



ATHENS-CLARKE COUNTY
LEISURE SERVICES DEPARTMENT

Project 40- Park Facility Improvements 2

Project History

- SPLOST 2011 Project 16 & Subprojects:
 - Holland Youth Sports Sewer replacement
 - Memorial Park Emergency Forebay Repairs
 - Bishop Park Tennis Court
 - Bishop Park Pool
 - World of Wonder Playground
 - Cook's Trail Safety Repairs
 - East Athens & Lay Park Pools



Project History

- SPLOST 2011 Project 16 & Subprojects:
 - Trail Bridge Replacement
 - East Athens & Lay Gym Floor Replacement
 - Tennis Court Resurfacing
 - Playground Part Replacement
 - Ball Field Drainage Improvements
 - Park Entry Signs
 - Bear Hollow Zoo Small Animal Exhibit



Project History

- SPLOST 2011 Project 16 & Subprojects:
 - Satterfield Park Improvements
 - Sandy Creek Park Dino Tot Lot Playground
 - Ben Burton Picnic Pavilion
 - Equipment Replacement



ATHENS-CLARKE COUNTY
LEISURE SERVICES DEPARTMENT

Project 40- Park Facility Improvements 5

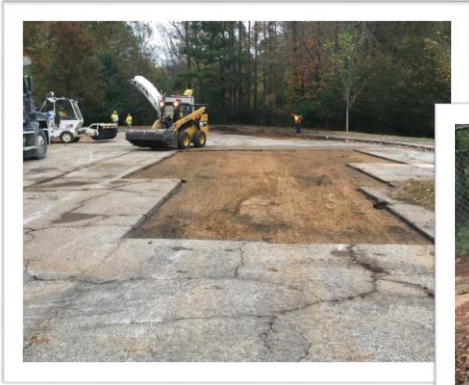
Park Signage



ATHENS-CLARKE COUNTY
LEISURE SERVICES DEPARTMENT

Project 40- Park Facility Improvements 6

Paving Replacement



ATHENS-CLARKE COUNTY
LEISURE SERVICES DEPARTMENT

Project 40- Park Facility Improvements 7

Bridge Inspections & Replacement



ATHENS-CLARKE COUNTY
LEISURE SERVICES DEPARTMENT

Project 40- Park Facility Improvements 8

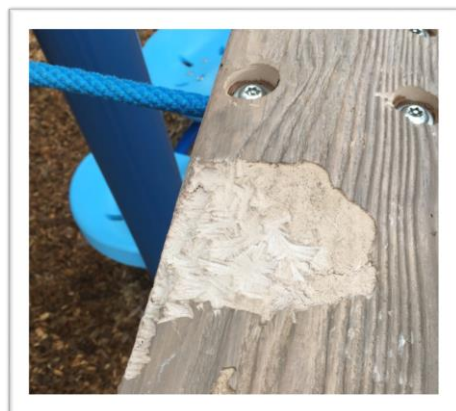
Bridge Inspections & Replacement



ATHENS-CLARKE COUNTY
LEISURE SERVICES DEPARTMENT

Project 40- Park Facility Improvements 9

Park Furnishings



ATHENS-CLARKE COUNTY
LEISURE SERVICES DEPARTMENT

Project 40- Park Facility Improvements 10

Equipment:

Trails & Open Spaces Mini Equipment



ATHENS-CLARKE COUNTY
LEISURE SERVICES DEPARTMENT

Project 40- Park Facility Improvements 11

Equipment:

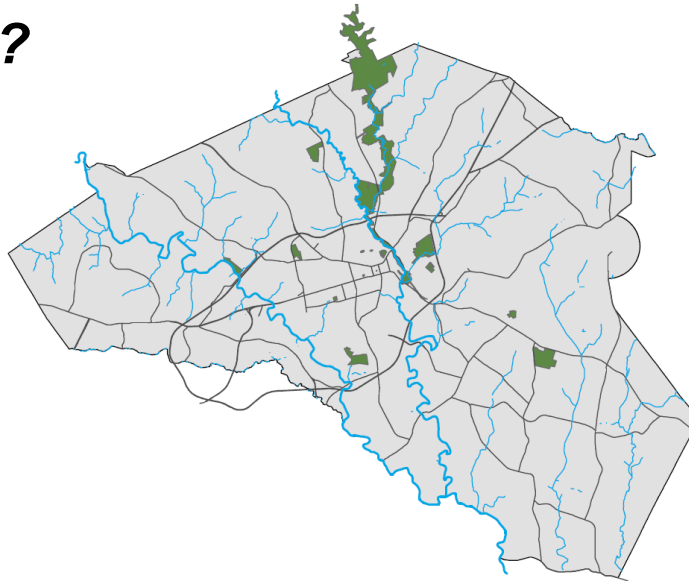
Soccer Pitch System



ATHENS-CLARKE COUNTY
LEISURE SERVICES DEPARTMENT

Project 40- Park Facility Improvements 12

Questions?



ATHENS-CLARKE COUNTY
LEISURE SERVICES DEPARTMENT

Project 40- Park Facility Improvements 13

Cost Detail

	Category	TOTALS
EQUIPMENT	Equipment	963,950
FACILITY R&M	Construction	7,071,970
POOL REPAIR	Equipment	1,648,400
Bride Inspection	Testing	190,500
Bridge Replacement	Equipment	3,975,750
Pavement Program	Construction	2,835,475
TAOS- Heavy Equipment	Cap. Equipment	35,000
Soccer Pitches	Cap. Equipment	35,000
Morton Forklift Replacement	Cap. Equipment	35,000
GRAND TOTALS		\$ 16,791,045.00

TOTALS by CATEGORY		
	CONSTRUCTION	\$ 9,907,445.00
	EQUIPMENT	\$ 6,588,100.00
	CAP EQUIP	\$ 105,000.00
	TESTING	\$ 190,500.00



ATHENS-CLARKE COUNTY
LEISURE SERVICES DEPARTMENT

Project 40- Park Facility Improvements 14

Cost Detail

Land Acquisition	-
DESIGN (NOT NEEDED)	-
Misc (3% of Construction)	297,223
FFE (Equipment)	6,588,100
Construction	9,907,445
Contingency (10% of Construction)	990,745
Cap Equipment	105,000
Testing	190,500
TOTAL of ABOVE	18,079,013
PM (4% of total above)	723,161
Project Contingency (10% of items above)	1,807,901
ART (1% of Construction)	180,790
Grand Total	\$ 20,790,864.78

