



### SPLOST 2020

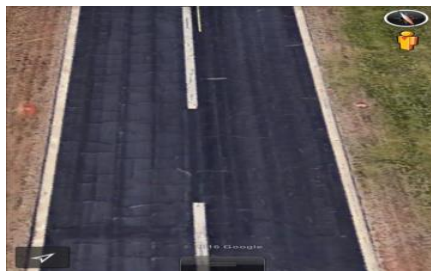
## 01 - Airport Capital Improvement Plan - Matching Funds

*Mike Mathews - Airport Director*

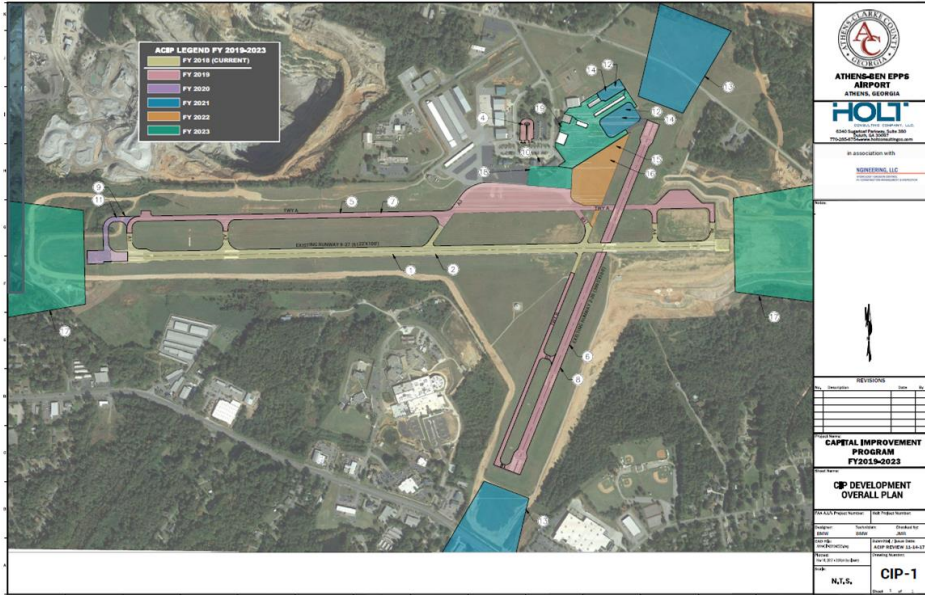
1

### Repaving Projects

- Taxiway A Improvements
- Runway 2 & Taxiway B
- Terminal Area & Ramp Pavement
- Partial Parallel Taxiway B Improvements and Apron
- East Terminal Apron
- Commercial Terminal -Aprons & Taxiways
- Expand East Terminal Apron
- Runway 9 Displaced Threshold Improvements

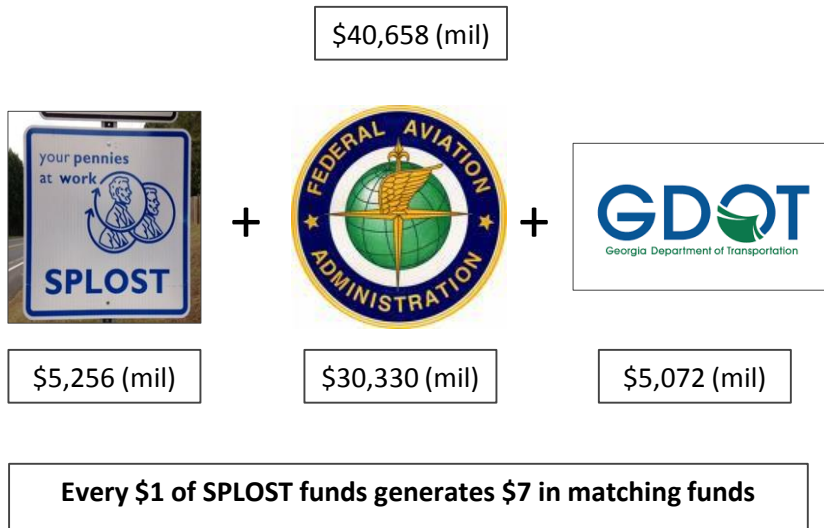


**Much of the pavement is failing and will be unusable in the very near future. If the pavement is unusable, then the airport cannot function.**



01-Airport Capital Improvement Plan - Matching Funds

### Project Cost - Matching funds



01-Airport Capital Improvement Plan - Matching Funds

## Other Projects

**Baggage Carousel & Parking Lot**



**Transient aircraft Hangar**



**Obstruction Clearing & Fencing**



**Master Plan Update**



01-Airport Capital Improvement Plan - Matching Funds

5

## Project Impact - Economic Prosperity



- Attract new businesses across a variety of sectors



- Increase tourist and conventions travel



- Provide facility to create Aircraft Maintenance job training program

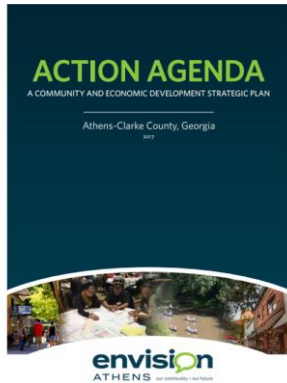


- Increase Airport operating revenue and profit

01-Airport Capital Improvement Plan - Matching Funds

6

## Project Impact - Social Well-Being



### Envision Athens Initiatives Impacted

- “Grow and advance commercial air service into Athens-Clarke County”
- “Pursue a comprehensive transportation safety program”
- “Repair and replace infrastructure assets commensurate with physical depreciation”
- “Provide the facilities and services necessary to attract, incubate, and grow businesses across a variety of sectors”
- “Create a marketing plan that will better position Athens to successfully compete for in-state and regional leisure and conventions travel”

01-Airport Capital Improvement Plan - Matching Funds

7

## Project Impact - Environmental Protection

### Athens Sustainability Draft Plan Initiatives Impacted

- “Update the airport master plan”
- “Complete the construction of a new commercial terminal”
- “Monitor the need to expand parking as commercial use of the airport increases”
- “Resurface Runway 9/27 and associated taxiways to maintain safe operations”
- “Develop a local landscaping guide to identify plants that should and should not be used within the airport overlay zone”



**The ACC Sustainability Plan is being revised and being made ready for presentation**

01-Airport Capital Improvement Plan - Matching Funds

8

## Questions & Answers



Mike Mathews,  
Airport Director