

Project Fact Sheets

Project Name

Future Drinking Water Regulations Treatment

Project Category

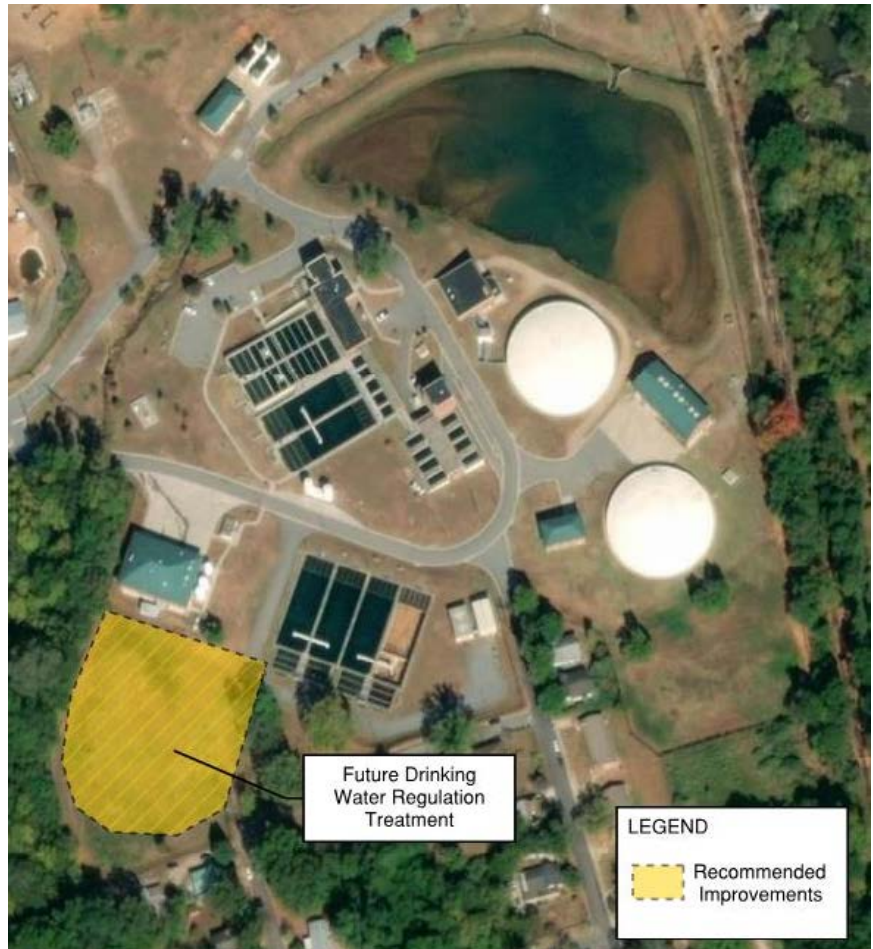
Public Health
Regulatory Requirement

Project Cost

\$1,000,000

Key Elements

1. Assess impact of future regulations on existing treatment
2. Evaluate potential treatment technologies for target compound removal and ability to meet future regulations



Project Description

- Assess impact of future drinking water regulations treatment scheme. Assess how existing facilities meet future regulations and identify gaps where new treatment technologies can be implemented to meet future regulations.
- Evaluate potential treatment technologies for future regulated compound removal and ability to meet future regulations.
- Characterize raw water quality from three separate sources of supply (Middle Oconee River, North Oconee River and Bear Creek Reservoir) for taste and odor, contaminants of emerging concern (CECs), and PFAS compounds.

Project Name

North Oconee WRF Total
Phosphorus Polishing

Project Category

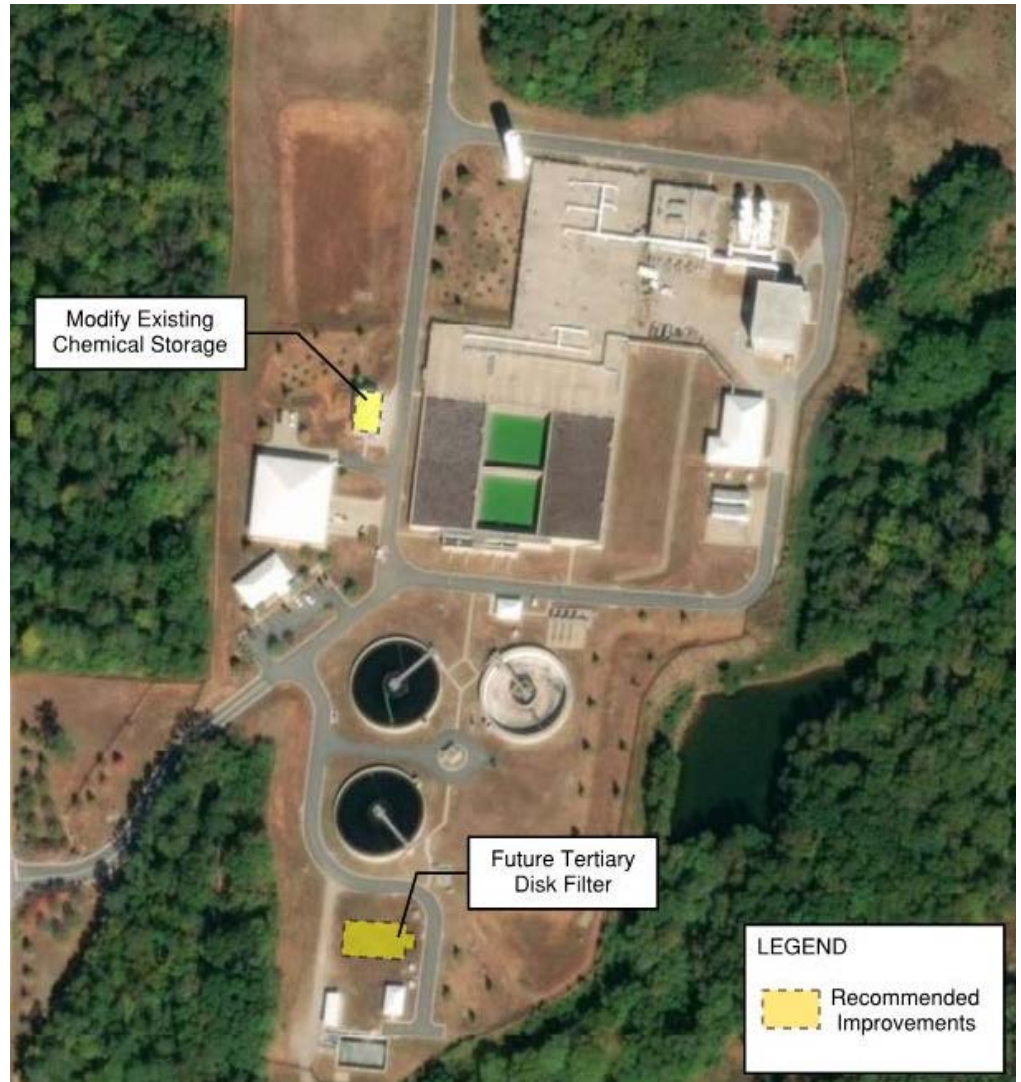
Public Health
Regulatory Requirement

Project Cost

\$11,100,000

Key Elements

1. Construction of rapid mix and flocculation facilities
2. Meet anticipated future effluent Total Phosphorus limit



Project Description

Includes the construction of the following facilities for a buildout capacity of 17.5 mgd MMF:

- Cloth media filters
- Rapid mix and flocculation facilities
- Addition of an alum tank to the existing chemical storage building and modify existing chemical pumps

Project Name

Middle Oconee WRF Total
Phosphorus Polishing

Project Category

Public Health
Regulatory Requirements

Project Cost

\$14,000,000

Key Elements

1. Installation of rapid mix and flocculation facilities
2. Meet anticipated future effluent Total Phosphorus limit
3. Construction of intermediate pump station



Project Description

Demolish the existing maintenance building and construct the following facilities for a buildout capacity of 12.5 mgd MMF:

- Intermediate Pump Station (30 mgd, designed for peak day conditions)
- Chemical Facility (alum storage and pumping)
- Rapid Mix and Flocculation
- Cloth Media Filters

Project Name

Cedar Creek WRF Total
Phosphorus Polishing

Project Category

Public Health
Regulatory Requirements

Project Cost

\$6,300,000

Key Elements

1. Installation of rapid mix and flocculation facilities
2. Meet anticipated future effluent Total Phosphorus limit



Project Description

Construct the following facilities for a capacity of 4 mgd:

- Cloth media filters
- Rapid mix and flocculation facilities
- Alum feed pumps

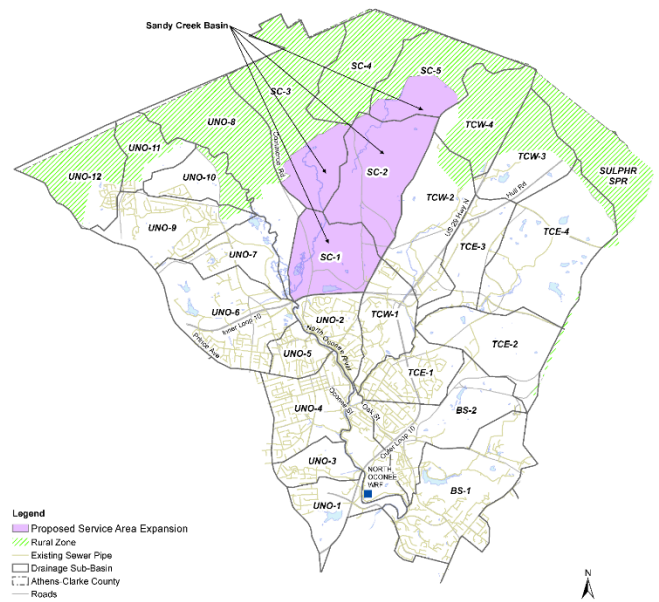
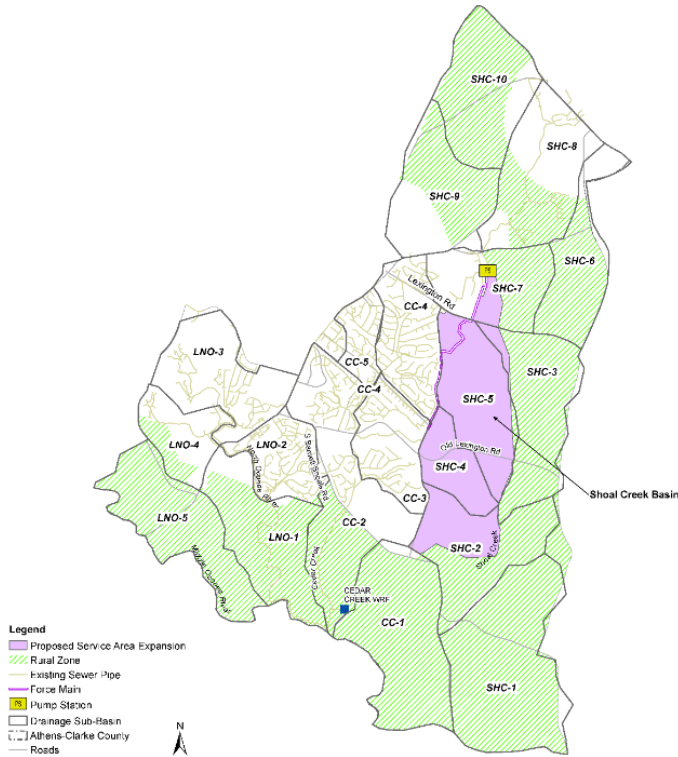
Project Name
 Alternative Sewer Solutions

Project Category
 Public Health Initiative

Project Cost
 \$5,000,000

Key Elements

1. Alternate sewer solutions for Sandy Creek and Shoal Creek sewer basins.



Project Description

Alternate sewer design to existing developments in the Sandy Creek Basin within the North Oconee WRF sewer basin (sub-basins: SC-1, SC-2, SC-3, and SC-5) and the Lower Shoal Creek drainage basin, within the Cedar Creek WRF sewer basin (sub-basins: SHC-2, SHC-3, SHC-4, SHC-5, SHC-7).